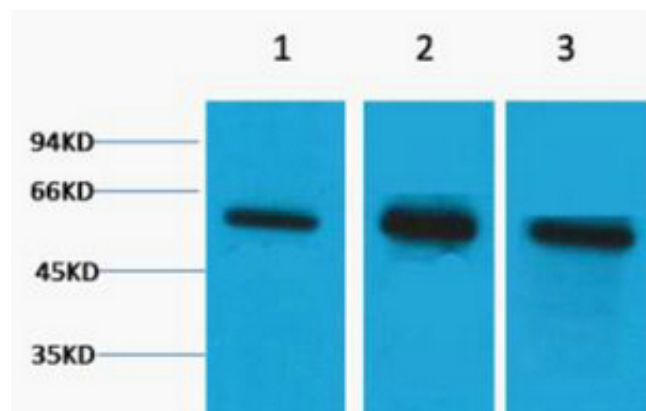




## β-tubulin Polyclonal Antibody

|                    |   |
|--------------------|---|
| Catalog_no :       | A1226   |
| Applications :     | WB  |
| Reactivity :       | Human,Mouse,Rat   |
| Category :         | 抗原抗体  |
| Size :             | 50μl/100μl  |
| Immunogen :        | Recombinant Protein of Tubulin beta   |
| Specificity :      | The antibody detects endogenous β tubulin protein.  |
| Formulation :      | PBS, pH 7.4, containing 0.02% sodium azide as Preservative and 50% Glycerol.  |
| Source :           | Rabbit  |
| Dilution :         | WB: 1:2000-5000   |
| Purification :     | The antibody was affinity-purified from rabbit antiserum by affinity-chromatography using specific immunogen.   |
| Concentration :    | 1 mg/ml   |
| Molecular Weight : | 55KD  |
| Storage buffer :   | PBS,pH 7.4,containing 0.02% sodium azide as Preservative and 50% Glycerol   |
| Store at :         | -20°C.Do not aliquot the antibody,For research use only   |
| Background :       | Microtubules are constituent parts of the mitotic apparatus, cilia, flagella, and elements of the cytoskeleton. They consist principally of 2 soluble proteins, alpha- and beta-tubulin, each of about 55,000 Da.Antibodies against beta Tubulin are used |

## Product Images



Western blot analysis of 1) Hela, 2) Mouse Brain, 3) Rat Brain tissue, diluted at 1:5000.. Secondary antibody was diluted at 1:20000