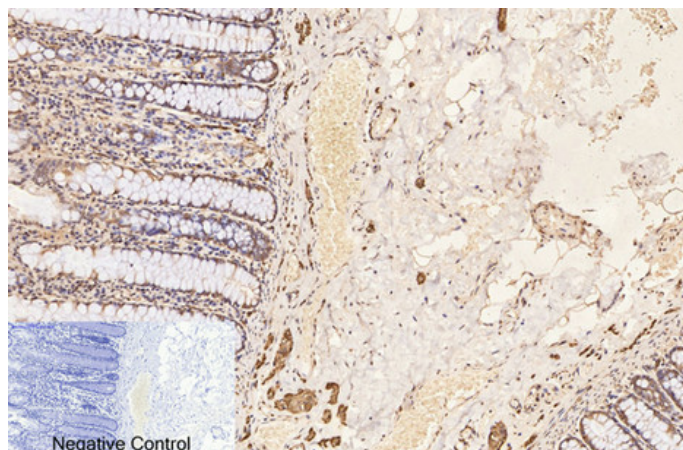




β -Tubulin Monoclonal Antibody(5G3)

Catalog_no :	A1031
Applications :	WB,IF,IHC-p
Reactivity :	Human,Rat,Mouse,Mk,Dg,Ch,Hamster,Rb,sheep,Insect,Yeast
Category :	抗原抗体
Size :	50 μ l/100 μ l
Immunogen :	Synthetic Peptide of β -Tubulin
Specificity :	The antibody detects endogenous β -tubulin protein.
Formulation :	PBS, pH 7.4, containing 0.02% sodium azide as Preservative and 50% Glycerol.
Source :	Mouse
Dilution :	WB: 1:5000 IHC: 1:200 IF 1:200
Purification :	The antibody was affinity-purified from mouse ascites by affinity-chromatography using specific immunogen.
Concentration :	1 mg/ml
Molecular Weight :	55KD
Storage buffer :	PBS,pH 7.4,containing 0.02% sodium azide as Preservative and 50% Glycerol
Store at :	-20°C.Do not aliquot the antibody,For research use only
Background :	Microtubules are constituent parts of the mitotic apparatus, cilia, flagella, and elements of the cytoskeleton. Theyconsist principally of 2 soluble proteins, alpha- and beta-tubulin, each of about 55,000 Da. Antibodies against beta Tubulin are usef

Product Images



Immunohistochemical analysis of paraffin-embedded Human-colon tissue. 1, β -Tubulin Monoclonal Antibody(5G3) was diluted at 1:200(4°C, overnight). 2, Sodium citrate pH 6.0 was used for antibody retrieval(>98°C, 20min). 3, Secondary antibody was diluted at 1:200(room temperature, 30min). Negative control was used by secondary antibody only.