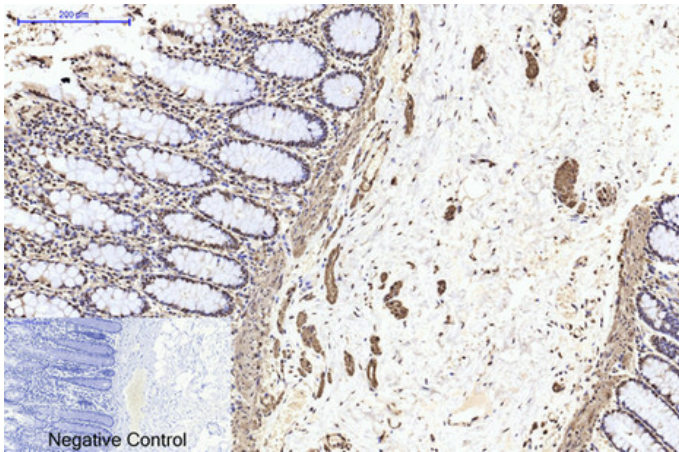


β II tubulin Monoclonal Antibody

Catalog_no :	A1191
Applications :	WB,IHC-p,IP
Reactivity :	Mouse,Rat,(H)
Category :	抗原抗体
Size :	50μl/100μl
Immunogen :	Synthetic Peptide of β II tubulin
Specificity :	The antibody detects endogenous β II tubulin protein.
Formulation :	PBS, pH 7.4, containing 0.02% sodium azide as Preservative and 50% Glycerol.
Source :	Mouse
Dilution :	WB: 1:50000-100000 IP:1:200 IHC 1:50-300
Purification :	The antibody was affinity-purified from mouse ascites by affinity-chromatography using specific immunogen.
Concentration :	1 mg/ml
Molecular Weight :	50KD
Storage buffer :	PBS,pH 7.4,containing 0.02% sodium azide as Preservative and 50% Glycerol
Store at :	-20°C.Do not aliquot the antibody,For research use only
Background :	Tubulin is the major constituent of microtubules. It exists as a heterodimer consisting of an alpha and a beta subunit. Class II beta tubulin is the major form of tubulin beta in neurons, although it is not neuron specific. It is found in many other

Product Images



Immunohistochemical analysis of paraffin-embedded Human-colon tissue. 1, β II tubulin Monoclonal Antibody(Mix) was diluted at 1:200(4°C, overnight). 2, Sodium citrate pH 6.0 was used for antibody retrieval(>98°C, 20min). 3, Secondary antibody was diluted at 1:200(room temperature, 30min). Negative control was used by secondary antibody only.