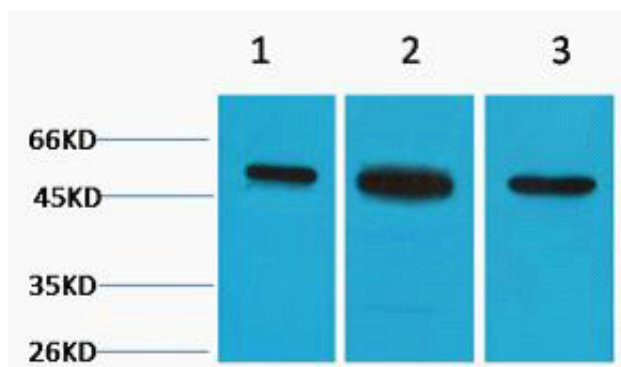


## β II Tubulin Polyclonal Antibody

Catalog_no :	A1212
Applications :	WB
Reactivity :	Human,Mouse,Rat
Category :	抗原抗体
Size :	50μl/100μl
Immunogen :	Synthetic Peptide of β II Tubulin
Specificity :	The antibody detects endogenous β II tubulin protein.
Formulation :	PBS, pH 7.4, containing 0.02% sodium azide as Preservative and 50% Glycerol.
Source :	Rabbit
Dilution :	WB: 1:2000-5000
Purification :	The antibody was affinity-purified from rabbit antiserum by affinity-chromatography using specific immunogen.
Concentration :	1 mg/ml
Molecular Weight :	50KD
Storage buffer :	PBS,pH 7.4,containing 0.02% sodium azide as Preservative and 50% Glycerol
Store at :	-20°C.Do not aliquot the antibody,For research use only
Background :	Tubulin is the major constituent of microtubules. It exists as a heterodimer consisting of an alpha and a beta subunit. Class II beta tubulin is the major form of tubulin beta in neurons, although it is not neuron specific. It is found in many other

## Product Images



Western blot analysis of 1) Hela, 2) 3T3, 3) Rat Kidney tissue, diluted at 1:3000.. Secondary antibody was diluted at 1:20000