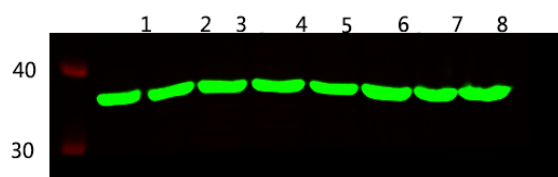


GAPDH Monoclonal Antibody(2B8)

Catalog_no :	A1030
Applications :	WB,IF,IHC-p
Reactivity :	Human,Rat,Mouse,Mk,Dg,Ch,Hamster,Rb,Pig,sheep,Insect,Yeast
Category :	抗原抗体
Size :	50μl/100μl
Immunogen :	Synthetic Peptide of GAPDH
Specificity :	The antibody detects endogenous GAPDH protein.
Formulation :	PBS, pH 7.4, containing 0.02% sodium azide as Preservative and 50% Glycerol.
Source :	Mouse
Dilution :	WB: 1:5000 IHC: 1:200 IF 1:200
Purification :	The antibody was affinity-purified from mouse ascites by affinity-chromatography using specific immunogen.
Concentration :	1 mg/ml
Molecular Weight :	37KD
Storage buffer :	PBS,pH 7.4,containing 0.02% sodium azide as Preservative and 50% Glycerol
Store at :	-20°C.Do not aliquot the antibody,For research use only
Background :	Glyceraldehyde 3 phosphate dehydrogenase (GAPDH) is well known as one of the key enzymes involved in glycolysis. GAPDH is constitutively expressed in almost all tissues at high levels, therefore antibodies against GAPDH are useful as loading controls

Product Images



Western blot analysis of 1 HEK293 2 SW480 3 HEPG2 4 MCF-7 5 mouse brain 6 Rat brain 7 Hela 8 A549 lysates, primary antibody was diluted at 1:5000, 4° over night, secondary antibody(cat : RS23910) was diluted at 1:10000, 37° 1hour.