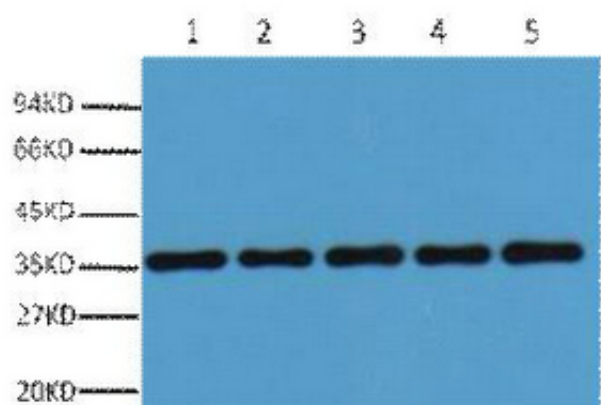




## GAPDH Polyclonal Antibody

|                    |  |
|--------------------|--|
| Catalog_no :       | A1034  |
| Applications :     | WB,IHC-p   |
| Reactivity :       | Human,Mouse,Rat,Rb,Ch,Mk,sheep,Xenopus   |
| Category :         | 抗原抗体   |
| Size :             | 50μl/100μl   |
| Immunogen :        | Recombinant Protein of GAPDH   |
| Specificity :      | The antibody detects endogenous GAPDH protein.   |
| Formulation :      | PBS, pH 7.4, containing 0.02% sodium azide as Preservative and 50% Glycerol.   |
| Source :           | Rabbit   |
| Dilution :         | WB: 1:5000 IHC: 1:200  |
| Purification :     | The antibody was affinity-purified from rabbit antiserum by affinity-chromatography using specific immunogen.  |
| Concentration :    | 1 mg/ml  |
| Molecular Weight : | 37KD   |
| Storage buffer :   | PBS,pH 7.4,containing 0.02% sodium azide as Preservative and 50% Glycerol  |
| Store at :         | -20°C.Do not aliquot the antibody,For research use only  |
| Background :       | Glyceraldehyde 3 phosphate dehydrogenase (GAPDH) is well known as one of the key enzymes involved in glycolysis. GAPDH is constitutively expressed in almost all tissues at high levels, therefore antibodies against GAPDH are useful as loading controls |

## Product Images



Western blot analysis of 293T (1), Rat brain (2), NIH 3T3 (3), Sheep Muscle (4), Rabbit testis (5), diluted at 1:20000.. Secondary antibody was diluted at 1:20000