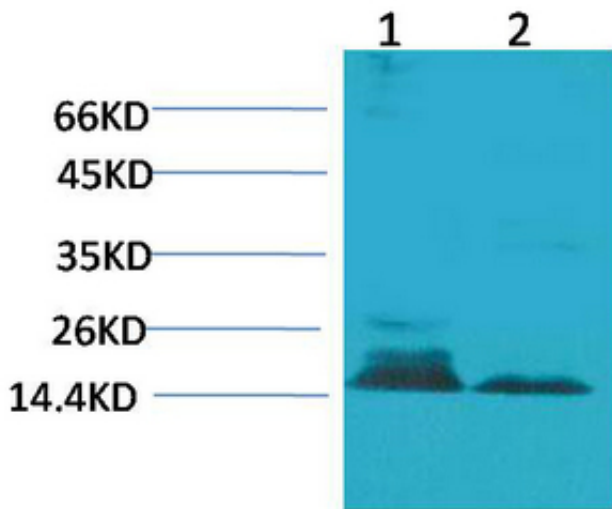


Histone H3 Polyclonal Antibody

Catalog_no :	A1236
Applications :	WB,IHC-p
Reactivity :	Human,Mouse,Rat
Category :	抗原抗体
Size :	50μl/100μl
Immunogen :	Synthetic Peptide of Histone H3
Specificity :	The antibody detects endogenous Histone H3 protein.
Formulation :	PBS, pH 7.4, containing 0.02% sodium azide as Preservative and 50% Glycerol.
Source :	Rabbit
Dilution :	WB: 1:500-1000 IHC: 1:200-500
Purification :	The antibody was affinity-purified from rabbit antiserum by affinity-chromatography using epitope-specific immunogen.
Concentration :	1 mg/ml
Molecular Weight :	15-17KD
Storage buffer :	PBS,pH 7.4,containing 0.02% sodium azide as Preservative and 50% Glycerol
Store at :	-20°C.Do not aliquot the antibody,For research use only
Background :	Histone H3 is one of the five main histone proteins involved in the structure of chromatin ineukaryotic cells. Core component of nucleosome. Nucleosomes wrap and compact DNA into chromatin, limitingDNA accessibility to the cellular machineries whic

Product Images



Western blot analysis of 1) HeLa, 2) 3T3 using Histone H3 Polyclonal Antibody.. Secondary antibody was diluted at 1:20000 cells nucleus extracted by Minute TM Cytoplasmic and Nuclear Fractionation kit (SC-003, Invent biotech, MN, USA).