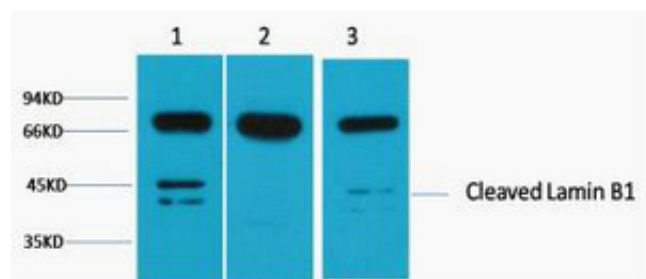




## Lamin B1 Polyclonal Antibody

Catalog_no :	A1205
Applications :	WB
Reactivity :	Human,Mouse,Rat
Category :	抗原抗体
Size :	50μl/100μl
Immunogen :	Recombinant Protein of Lamin-B1
Specificity :	The antibody detects endogenous Lamin B1 protein.
Formulation :	PBS, pH 7.4, containing 0.02% sodium azide as Preservative and 50% Glycerol.
Source :	Rabbit
Dilution :	WB: 1:1000-3000
Purification :	The antibody was affinity-purified from rabbit antiserum by affinity-chromatography using specific immunogen.
Concentration :	1 mg/ml
Molecular Weight :	68KD,45KD
Storage buffer :	PBS,pH 7.4,containing 0.02% sodium azide as Preservative and 50% Glycerol
Store at :	-20°C.Do not aliquot the antibody,For research use only
Background :	The nuclear lamina consists of a two The lamin family of proteins make up the matrix and arehighly conserved in evolution. During mitosis, the lamina matrix is r disassembled as the lamin proteins arephosphorylated. Lamin proteins are thought to be

## Product Images



Western blot analysis of 1) 293T, 2) Mouse Brain, 3) Rat Brain tissue, diluted at 1:2000.. Secondary antibody was diluted at 1:20000 cells nucleus extracted by Minute TM Cytoplasmic and Nuclear Fractionation kit (SC-003, Invent biotech, MN, USA).