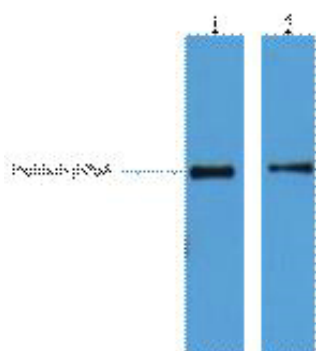


His-Tag Monoclonal Antibody(4E6)

| | |
|--------------------|--|
| Catalog_no : | A1004 |
| Applications : | WB,IP,IF |
| Reactivity : | Species independent |
| Category : | 抗原抗体 |
| Size : | 50μl/100μl |
| Immunogen : | Synthetic peptide:HHHHHH conjugated to KLH. |
| Specificity : | The antibody detects C-terminal, internal, and N-terminal His-tag fusion proteins. |
| Formulation : | PBS, pH 7.4, containing 0.02% sodium azide as Preservative and 50% Glycerol. |
| Source : | Mouse |
| Dilution : | WB: 1:3000 IP: 1:200 IF: 1:1000 |
| Purification : | The antibody was affinity-purified from mouse ascites by affinity-chromatography using specific immunogen. |
| Molecular Weight : | N/A |
| Storage buffer : | PBS, pH 7.4, containing 0.02% sodium azide as Preservative and 50% Glycerol |
| Store at : | -20°C.Do not aliquot the antibody,For research use only |

Product Images



2ug His fusion protein+ Primary antibody dilution at 1)
1:5000;2) 1:10000