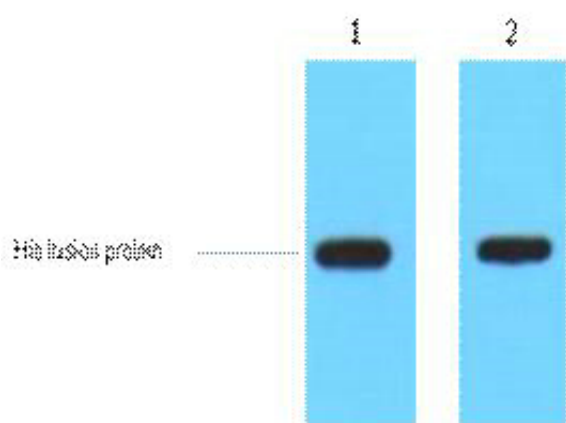




## His-Tag Polyclonal Antibody

Catalog_no :	A1023
Applications :	WB
Reactivity :	Species independent
Category :	抗原抗体
Size :	50μl/100μl
Immunogen :	Synthetic peptide:HHHHHH conjugated to KLH.
Specificity :	The antibody detects C-terminal, internal, and N-terminal His-tag fusion proteins.
Formulation :	PBS, pH 7.4, containing 0.02% sodium azide as Preservative and 50% Glycerol.
Source :	Rabbit
Dilution :	WB: 1:5000
Purification :	The antibody was affinity-purified from rabbit antiserum by affinity-chromatography using specific immunogen.
Molecular Weight :	N/A
Storage buffer :	PBS, pH 7.4, containing 0.02% sodium azide as Preservative and 50% Glycerol
Store at :	-20°C.Do not aliquot the antibody,For research use only

## Product Images



1ug His fusion protein+ Primary antibody dilution at 1) 1:5000;2) 1:20000. Secondary antibody was diluted at 1:20000