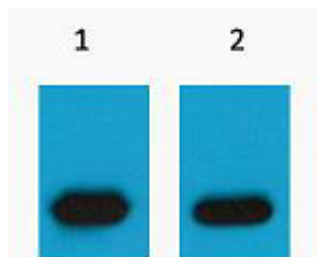




mCherry-Tag Polyclonal Antibody

Catalog_no :	A1026
Applications :	WB
Reactivity :	Species independent
Category :	抗原抗体
Size :	50μl/100μl
Immunogen :	Recombinant Protein of mCherry-Tag
Specificity :	The antibody detects mCherry and mCherry tag fusion proteins.
Formulation :	PBS, pH 7.4, containing 0.02% sodium azide as Preservative and 50% Glycerol.
Source :	Rabbit
Dilution :	WB: 1:5000 -10000
Purification :	The antibody was affinity-purified from rabbit antiserum by affinity-chromatography using specific immunogen.
Storage_stability :	-20°C/1 year
Molecular Weight :	N/A
Background :	mCherry is derived from proteins originally isolated from Cnidarians (jelly fish, sea anemones and corals), and is used as a fluorescent tracer in trasfection and transgenic experiments. The prototype for these fluorescent proteins is Green Fluorescent Protein (GFP), which is a ~27kDa protein isolated originally from the jellyfish Aequoria victoria. The mCherry protein is derived from DsRed, a red fluorescent protein related to GFP isolated from so-called disc corals of the genus Discosoma.

Product Images



Western blot analysis of mCherry Recombinant protein, diluted at 1) 1:5000;2) 1:20000. Secondary antibody was diluted at 1:20000