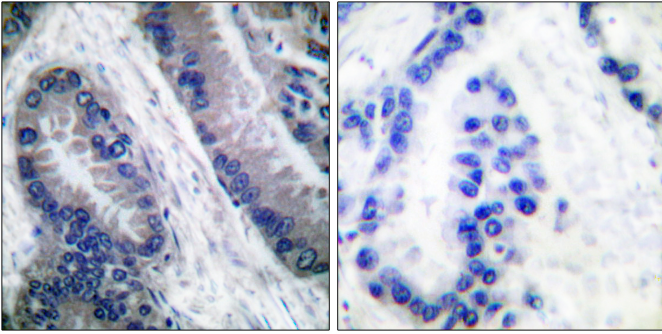




## Cleaved-Caspase-1 (M211) Polyclonal Antibody

Catalog_no :	AC0003
Applications :	IHC-p,ELISA
Reactivity :	Human
Category :	抗原抗体
Size :	100µg/50µg/20µg
Gene_name :	CASP1
Protein_name :	Caspase-1
Humangene_id :	<a href="#">834</a>
Humanswissprot_no :	<a href="#">P29466</a>
Immunogen :	The antiserum was produced against synthesized peptide derived from human CASP1. AA range:192-241
Specificity :	Cleaved-Caspase-1 (M211) Polyclonal Antibody detects endogenous levels of fragment of activated Caspase-1 protein resulting from cleavage adjacent to M211.
Formulation :	Liquid in PBS containing 50% glycerol, 0.5% BSA and 0.02% sodium azide.
Source :	Rabbit
Dilution :	Immunohistochemistry: 1/100 - 1/300. ELISA: 1/20000. Not yet tested in other applications.
Purification :	The antibody was affinity-purified from rabbit antiserum by affinity-chromatography using epitope-specific immunogen.
Concentration :	1 mg/ml
Storage_stability :	-20°C/1 year
Msds :	MSDS_Antibody.pdf
Other_name :	CASP1; IL1BC; IL1BCE; Caspase-1; CASP-1; Interleukin-1 beta convertase; IL-1BC; Interleukin-1 beta-converting enzyme; ICE; IL-1 beta-converting enzyme; p45

## Product Images



Immunohistochemistry analysis of paraffin-embedded human lung carcinoma, using IL-1 beta (Cleaved-Asp210) Antibody. The picture on the right is blocked with the synthesized peptide.