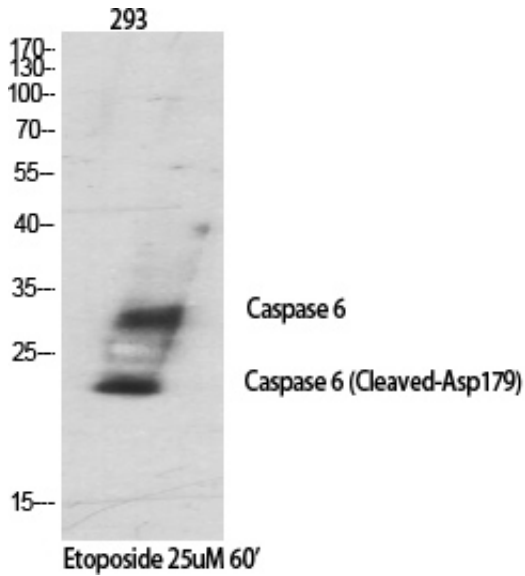


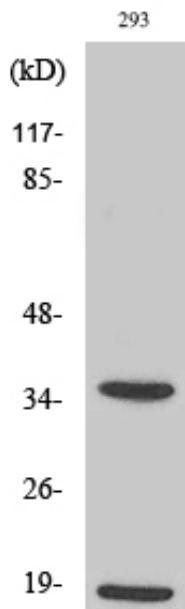
## Cleaved-Caspase-6 p18 (D179) Polyclonal Antibody

Catalog_no :	AC0008
Applications :	WB,IHC-p,ELISA
Reactivity :	Human,Rat
Category :	抗原抗体
Size :	100µg/50µg/20µg
Gene_name :	CASP6
Protein_name :	Caspase-6
Humangene_id :	<a href="#">839</a>
Humanswissprot_no :	<a href="#">P55212</a>
Ratswissprot_no :	<a href="#">O35397</a>
Immunogen :	The antiserum was produced against synthesized peptide derived from human Caspase 6. AA range:130-179
Specificity :	Cleaved-Caspase-6 p18 (D179) Polyclonal Antibody detects endogenous levels of fragment of activated Caspase-6 p18 protein resulting from cleavage adjacent to D179.
Formulation :	Liquid in PBS containing 50% glycerol, 0.5% BSA and 0.02% sodium azide.
Source :	Rabbit
Dilution :	Western Blot: 1/500 - 1/2000. Immunohistochemistry: 1/100 - 1/300. ELISA: 1/40000. Not yet tested in other applications.
Purification :	The antibody was affinity-purified from rabbit antiserum by affinity-chromatography using epitope-specific immunogen.
Concentration :	1 mg/ml
Storage_stability :	-20°C/1 year
Msd :	MSDS_Antibody.pdf
Other_name :	CASP6; MCH2; Caspase-6; CASP-6; Apoptotic protease Mch-2
Molecular Weight :	20+35KD

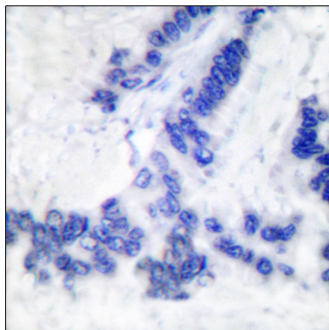
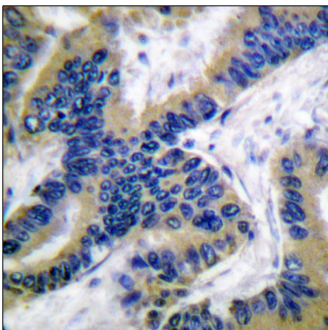
## Product Images



Western Blot analysis of various cells using Cleaved-Caspase-6 p18 (D179) Polyclonal Antibody diluted at 1 : 1000



Western Blot analysis of 293 cells using Cleaved-Caspase-6 p18 (D179) Polyclonal Antibody diluted at 1 : 1000



Immunohistochemistry analysis of paraffin-embedded human lung carcinoma tissue, using Caspase 6 (Cleaved-Asp162) Antibody. The picture on the right is blocked with the synthesized peptide.

Western blot analysis of lysates from 293 cells, treated with Etoposide 25uM 60', using Caspase 6 (Cleaved-Asp162) Antibody. The lane on the right is blocked with the synthesized peptide.

