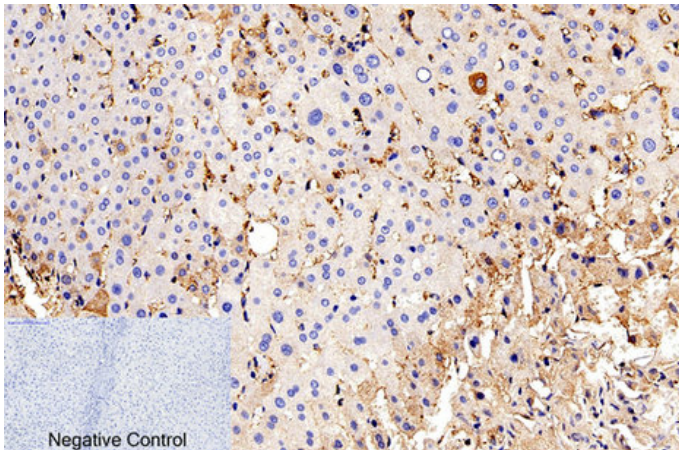


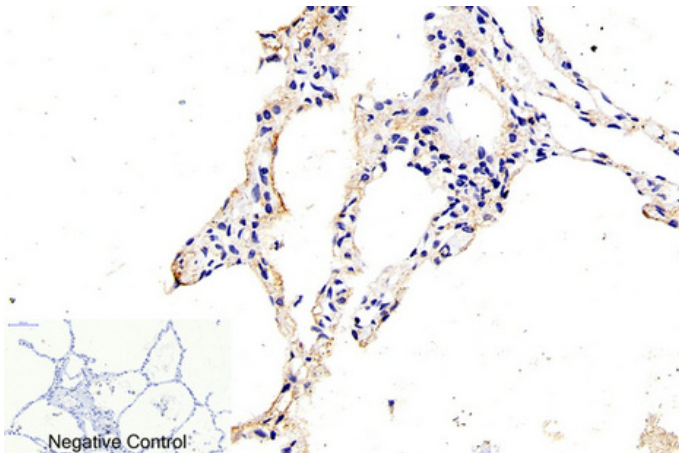
Cleaved-Caspase-9 p35 (D315) Polyclonal Antibody

Catalog_no :	AC0014
Applications :	WB,IHC-p,IF,ELISA
Reactivity :	Human
Category :	抗原抗体
Size :	100µg/50µg/20µg
Gene_name :	CASP9
Protein_name :	Caspase-9
Humangene_id	842
:	
Humanswissprot	P55211
_no :	
Immunogen :	The antiserum was produced against synthesized peptide derived from human Caspase 9. AA range:266-315
Specificity :	Cleaved-Caspase-9 p35 (D315) Polyclonal Antibody detects endogenous levels of fragment of activated Caspase-9 p35 protein resulting from cleavage adjacent to D315.
Formulation :	Liquid in PBS containing 50% glycerol, 0.5% BSA and 0.02% sodium azide.
Source :	Rabbit
Dilution :	WB 1:500-2000, IHC-p 1:50-300, IF 1:50-300
Purification :	The antibody was affinity-purified from rabbit antiserum by affinity-chromatography using epitope-specific immunogen.
Concentration :	1 mg/ml
Storage_stability	-20°C/1 year
:	
Msds :	MSDS_Antibody.pdf
Other_name :	CASP9; MCH6; Caspase-9; CASP-9; Apoptotic protease Mch-6; Apoptotic protease-activating factor 3; APAF-3; ICE-like apoptotic protease 6; ICE-LAP6
Molecular Weight :	37KD

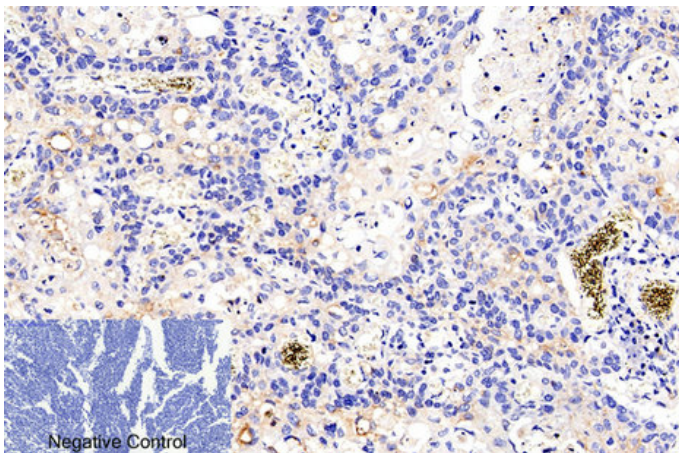
Product Images



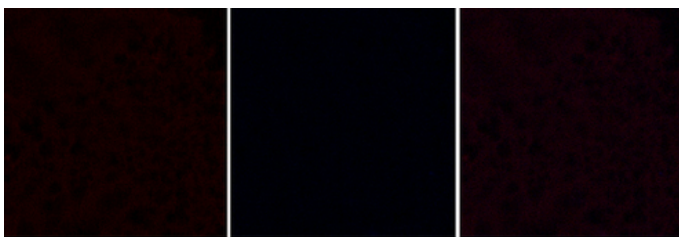
Immunohistochemical analysis of paraffin-embedded Human-liver tissue. 1,Cleaved-Caspase-9 p35 (D315) Polyclonal Antibody was diluted at 1:200(4°C,overnight). 2, Sodium citrate pH 6.0 was used for antibody retrieval(>98°C,20min). 3,Secondary antibody was diluted at 1:200(room temperature, 30min). Negative control was used by secondary antibody only.



Immunohistochemical analysis of paraffin-embedded Human-lung tissue. 1,Cleaved-Caspase-9 p35 (D315) Polyclonal Antibody was diluted at 1:200(4°C,overnight). 2, Sodium citrate pH 6.0 was used for antibody retrieval(>98°C,20min). 3,Secondary antibody was diluted at 1:200(room temperature, 30min). Negative control was used by secondary antibody only.

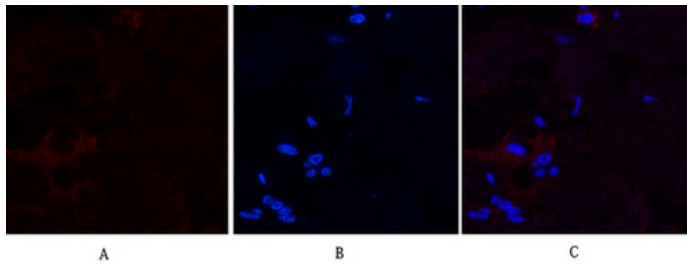


Immunohistochemical analysis of paraffin-embedded Human-lung-cancer tissue. 1,Cleaved-Caspase-9 p35 (D315) Polyclonal Antibody was diluted at 1:200(4°C,overnight). 2, Sodium citrate pH 6.0 was used for antibody retrieval(>98°C,20min). 3,Secondary antibody was diluted at 1:200(room temperature, 30min). Negative control was used by secondary antibody only.

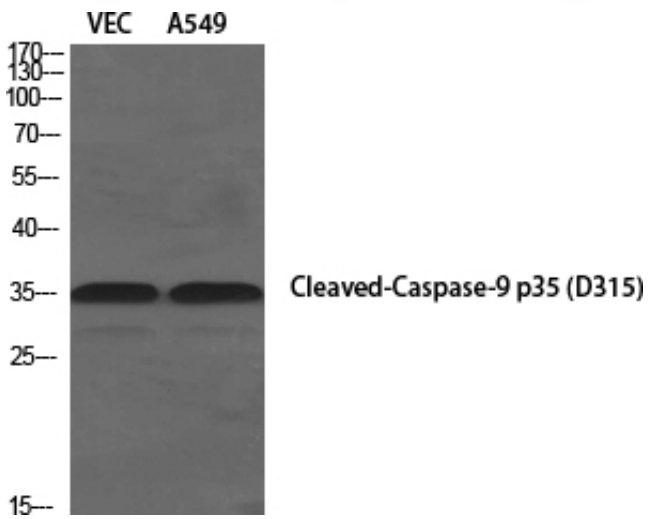


Immunofluorescence analysis of Human-breast tissue. 1,Cleaved-Caspase-9 p35 (D315) Polyclonal Antibody(red) was diluted at 1:200(4°C,overnight). 2, Cy3 labeled Secondary antibody was diluted at 1:300(room temperature, 50min).3, Picture B: DAPI(blue) 10min. Picture A:Target. Picture B: DAPI. Picture C: merge of A+B

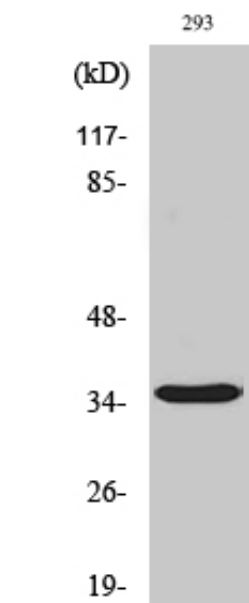
Immunofluorescence analysis of Human-breast tissue. 1,Cleaved-Caspase-9 p35 (D315) Polyclonal Antibody(red) was diluted at 1:200(4°C,overnight). 2, Cy3



labeled Secondary antibody was diluted at 1:300(room temperature, 50min).3, Picture B: DAPI(blue) 10min. Picture A:Target. Picture B: DAPI. Picture C: merge of A+B



Western Blot analysis of various cells using Cleaved-Caspase-9 p35 (D315) Polyclonal Antibody diluted at 1 : 1000



Western Blot analysis of 293 cells using Cleaved-Caspase-9 p35 (D315) Polyclonal Antibody diluted at 1 : 1000