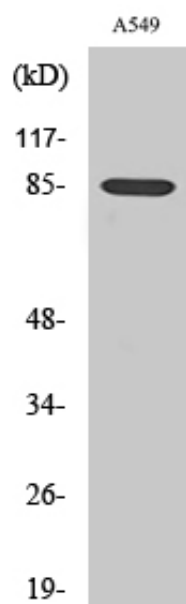




## ADAM10 Polyclonal Antibody

Catalog_no :	AC0015
Applications :	WB,ELISA
Reactivity :	Human
Category :	抗原抗体
Size :	100µg/50µg/20µg
Gene_name :	ADAM10
Protein_name :	Disintegrin and metalloproteinase domain-containing protein 10
Humangene_id :	<a href="#">102</a>
Humanswissprot_no :	<a href="#">O14672</a>
Immunogen :	Synthesized peptide derived from ADAM10 . at AA range: 170-250
Specificity :	ADAM10 Polyclonal Antibody detects endogenous levels of ADAM10 protein.
Formulation :	Liquid in PBS containing 50% glycerol, 0.5% BSA and 0.02% sodium azide.
Source :	Rabbit
Dilution :	Western Blot: 1/500 - 1/2000. ELISA: 1/20000. Not yet tested in other applications.
Purification :	The antibody was affinity-purified from rabbit antiserum by affinity-chromatography using epitope-specific immunogen.
Concentration :	1 mg/ml
Storage_stability :	-20°C/1 year
Msds :	MSDS_Antibody.pdf
Other_name :	ADAM10; KUZ; MADM; Disintegrin and metalloproteinase domain-containing protein 10; ADAM 10; CDw156; Kuzbanian protein homolog; Mammalian disintegrin-metalloprotease; CD antigen CD156c
Molecular Weight :	85KD

## Product Images



Western Blot analysis of various cells using ADAM10 Polyclonal Antibody