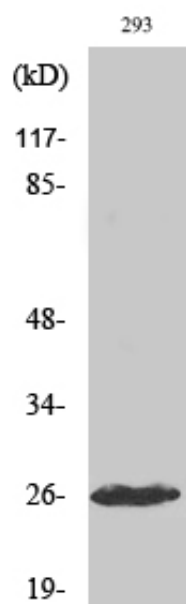


## Cleaved-C1r LC (I464) Polyclonal Antibody

Catalog_no :	AC0019
Applications :	WB,ELISA
Reactivity :	Human
Category :	抗原抗体
Size :	100µg/50µg/20µg
Gene_name :	C1R
Protein_name :	Complement C1r subcomponent
Humangene_id :	<a href="#">715</a>
Humanswissprot_no :	<a href="#">P00736</a>
Immunogen :	The antiserum was produced against synthesized peptide derived from human C1R. AA range:445-494
Specificity :	Cleaved-C1r LC (I464) Polyclonal Antibody detects endogenous levels of fragment of activated C1r LC protein resulting from cleavage adjacent to I464.
Formulation :	Liquid in PBS containing 50% glycerol, 0.5% BSA and 0.02% sodium azide.
Source :	Rabbit
Dilution :	Western Blot: 1/500 - 1/2000. ELISA: 1/20000. Not yet tested in other applications.
Purification :	The antibody was affinity-purified from rabbit antiserum by affinity-chromatography using epitope-specific immunogen.
Concentration :	1 mg/ml
Storage_stability :	-20°C/1 year
Msds :	MSDS_Antibody.pdf
Other_name :	C1R; Complement C1r subcomponent; Complement component 1 subcomponent r
Molecular Weight :	27KD

## Product Images



Western Blot analysis of various cells using Cleaved-C1r LC (I464) Polyclonal Antibody