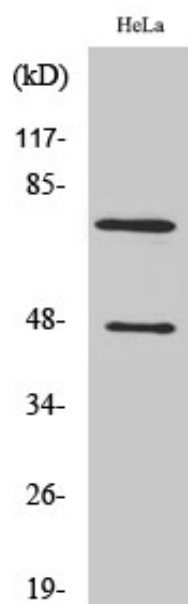


Cleaved-C1s HC (R437) Polyclonal Antibody

Catalog_no :	AC0020
Applications :	WB,ELISA
Reactivity :	Human
Category :	抗原抗体
Size :	100µg/50µg/20µg
Gene_name :	C1S
Protein_name :	Complement C1s subcomponent
Humangene_id :	716
Humanswissprot_no :	P09871
Immunogen :	The antiserum was produced against synthesized peptide derived from human C1S. AA range:388-437
Specificity :	Cleaved-C1s HC (R437) Polyclonal Antibody detects endogenous levels of fragment of activated C1s HC protein resulting from cleavage adjacent to R437.
Formulation :	Liquid in PBS containing 50% glycerol, 0.5% BSA and 0.02% sodium azide.
Source :	Rabbit
Dilution :	Western Blot: 1/500 - 1/2000. ELISA: 1/20000. Not yet tested in other applications.
Purification :	The antibody was affinity-purified from rabbit antiserum by affinity-chromatography using epitope-specific immunogen.
Concentration :	1 mg/ml
Storage_stability :	-20°C/1 year
Msds :	MSDS_Antibody.pdf
Other_name :	C1S; Complement C1s subcomponent; C1 esterase; Complement component 1 subcomponent s
Molecular Weight :	47+76KD

Product Images



Western Blot analysis of various cells using Cleaved-C1s
HC (R437) Polyclonal Antibody