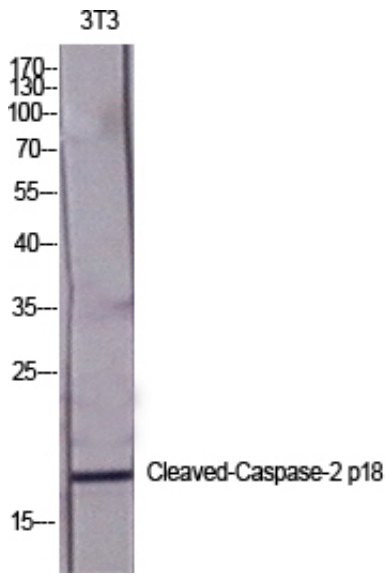


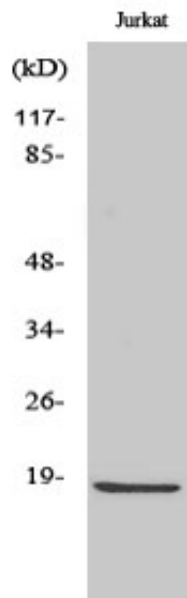
## Cleaved-Caspase-2 p18 (G170) Polyclonal Antibody

|                     |   |
|---------------------|---|
| Catalog_no :        | AC0024  |
| Applications :      | WB,ELISA  |
| Reactivity :        | Human,Mouse,Rat   |
| Category :          | 抗原抗体  |
| Size :              | 100µg/50µg/20µg   |
| Gene_name :         | CASP2   |
| Protein_name :      | Caspase-2   |
| Humangene_id :      | <a href="#">835</a>   |
| Humanswissprot_no : | <a href="#">P42575</a>  |
| Immunogen :         | The antiserum was produced against synthesized peptide derived from human Caspase 2. AA range:151-200   |
| Specificity :       | Cleaved-Caspase-2 p18 (G170) Polyclonal Antibody detects endogenous levels of fragment of activated Caspase-2 p18 protein resulting from cleavage adjacent to G170. |
| Formulation :       | Liquid in PBS containing 50% glycerol, 0.5% BSA and 0.02% sodium azide.   |
| Source :            | Rabbit  |
| Dilution :          | Western Blot: 1/500 - 1/2000. ELISA: 1/40000. Not yet tested in other applications.   |
| Purification :      | The antibody was affinity-purified from rabbit antiserum by affinity-chromatography using epitope-specific immunogen.   |
| Concentration :     | 1 mg/ml   |
| Storage_stability : | -20°C/1 year  |
| Msds :              | MSDS_Antibody.pdf   |
| Other_name :        | CASP2; ICH1; NEDD2; Caspase-2; CASP-2; Neural precursor cell expressed developmentally down-regulated protein 2; NEDD-2; Protease ICH-1                             |
| Molecular Weight :  | 18 or 35KD  |

## Product Images



Western Blot analysis of various cells using Cleaved-Caspase-2 p18 (G170) Polyclonal Antibody diluted at 1 : 2000



Western Blot analysis of Jurkat cells using Cleaved-Caspase-2 p18 (G170) Polyclonal Antibody diluted at 1 : 2000