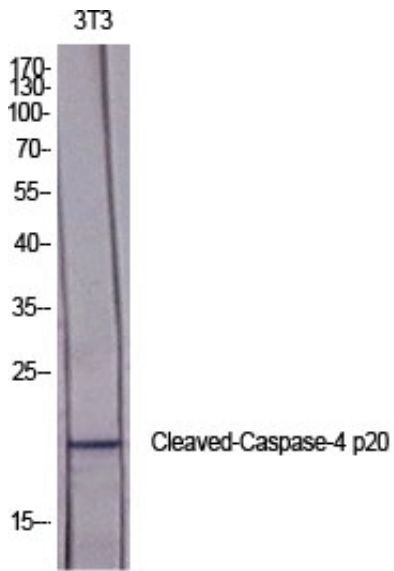


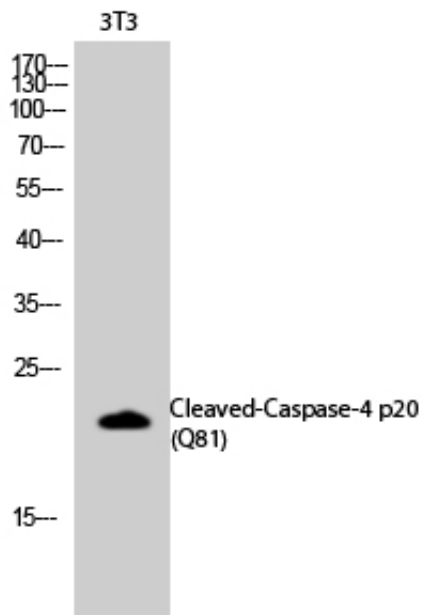
## Cleaved-Caspase-4 p20 (Q81) Polyclonal Antibody

Catalog_no :	AC0028
Applications :	WB,IHC-p,ELISA
Reactivity :	Human
Category :	抗原抗体
Size :	100µg/50µg/20µg
Gene_name :	CASP4
Protein_name :	Caspase-4
Humangene_id :	<a href="#">837</a>
Humanswissprot_no :	<a href="#">P49662</a>
Immunogen :	The antiserum was produced against synthesized peptide derived from human Caspase 4. AA range:62-111
Specificity :	Cleaved-Caspase-4 p20 (Q81) Polyclonal Antibody detects endogenous levels of fragment of activated Caspase-4 p20 protein resulting from cleavage adjacent to Q81.
Formulation :	Liquid in PBS containing 50% glycerol, 0.5% BSA and 0.02% sodium azide.
Source :	Rabbit
Dilution :	Western Blot: 1/500 - 1/2000. Immunohistochemistry: 1/100 - 1/300. ELISA: 1/40000. Not yet tested in other applications.
Purification :	The antibody was affinity-purified from rabbit antiserum by affinity-chromatography using epitope-specific immunogen.
Concentration :	1 mg/ml
Storage_stability :	-20°C/1 year
Msds :	<a href="#">MSDS_Antibody.pdf</a>
Other_name :	CASP4; ICH2; Caspase-4; CASP-4; ICE(rel)-II; Protease ICH-2; Protease TX
Molecular Weight :	43+22KD

## Product Images



Western Blot analysis of various cells using Cleaved-Caspase-4 p20 (Q81) Polyclonal Antibody diluted at 1 : 2000



Western Blot analysis of 3T3 cells using Cleaved-Caspase-4 p20 (Q81) Polyclonal Antibody diluted at 1 : 2000