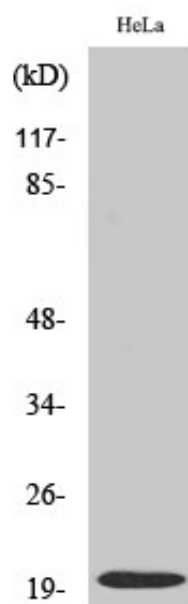


## Cleaved-Caspase-5 p20 (D121) Polyclonal Antibody

Catalog_no :	AC0031
Applications :	WB,ELISA
Reactivity :	Human
Category :	抗原抗体
Size :	100µg/50µg/20µg
Gene_name :	CASP5
Protein_name :	Caspase-5
Humangene_id :	<a href="#">838</a>
Humanswissprot_no :	<a href="#">P51878</a>
Immunogen :	The antiserum was produced against synthesized peptide derived from human Caspase 5. AA range:102-151
Specificity :	Cleaved-Caspase-5 p20 (D121) Polyclonal Antibody detects endogenous levels of fragment of activated Caspase-5 p20 protein resulting from cleavage adjacent to D121.
Formulation :	Liquid in PBS containing 50% glycerol, 0.5% BSA and 0.02% sodium azide.
Source :	Rabbit
Dilution :	Western Blot: 1/500 - 1/2000. ELISA: 1/20000. Not yet tested in other applications.
Purification :	The antibody was affinity-purified from rabbit antiserum by affinity-chromatography using epitope-specific immunogen.
Concentration :	1 mg/ml
Storage_stability :	-20°C/1 year
Msds :	MSDS_Antibody.pdf
Other_name :	CASP5; ICH3; Caspase-5; CASP-5; ICE(rel)-III; Protease ICH-3; Protease TY
Molecular Weight :	22KD

## Product Images



Western Blot analysis of various cells using Cleaved-Caspase-5 p20 (D121) Polyclonal Antibody diluted at 1 : 1000