

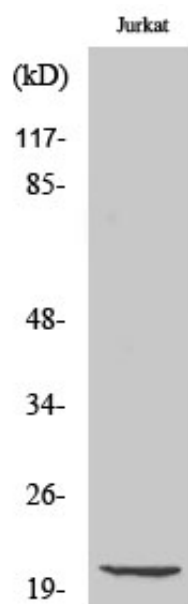
Cleaved-Caspase-7 p20 (D198) Polyclonal Antibody

Catalog_no :	AC0033
Applications :	WB,ELISA
Reactivity :	Human,Mouse
Category :	抗原抗体
Size :	100µg/50µg/20µg
Gene_name :	CASP7
Protein_name :	Caspase-7
Humangene_id :	840
Humanswissprot_no :	P55210
Mousegene_id :	12369
Mouseswissprot_no :	P97864
Immunogen :	The antiserum was produced against synthesized peptide derived from human Caspase 7. AA range:149-198
Specificity :	Cleaved-Caspase-7 p20 (D198) Polyclonal Antibody detects endogenous levels of fragment of activated Caspase-7 p20 protein resulting from cleavage adjacent to D198.
Formulation :	Liquid in PBS containing 50% glycerol, 0.5% BSA and 0.02% sodium azide.
Source :	Rabbit
Dilution :	Western Blot: 1/500 - 1/2000. ELISA: 1/40000. Not yet tested in other applications.
Purification :	The antibody was affinity-purified from rabbit antiserum by affinity-chromatography using epitope-specific immunogen.
Concentration :	1 mg/ml
Storage_stability :	-20°C/1 year
Msds :	MSDS_Antibody.pdf
Other_name :	CASP7; MCH3; Caspase-7; CASP-7; Apoptotic protease Mch-3; CMH-1; ICE-like apoptotic protease 3; ICE-LAP3
Molecular	20KD



Weight :

Product Images



Western Blot analysis of various cells using Cleaved-Caspase-7 p20 (D198) Polyclonal Antibody