

## Cleaved-Cathepsin A 32k (R326) Polyclonal Antibody

Catalog_no :	AC0034
Applications :	WB,ELISA
Reactivity :	Human,Mouse
Category :	抗原抗体
Size :	100µg/50µg/20µg
Gene_name :	CTSA
Protein_name :	Lysosomal protective protein
Humangene_id :	<a href="#">5476</a>
Humanswissprot_no :	<a href="#">P10619</a>
Mousegene_id :	<a href="#">19025</a>
Mouseswissprot_no :	<a href="#">P16675</a>
Immunogen :	The antiserum was produced against synthesized peptide derived from human PPGB. AA range:277-326
Specificity :	Cleaved-Cathepsin A 32k (R326) Polyclonal Antibody detects endogenous levels of fragment of activated Cathepsin A 32k protein resulting from cleavage adjacent to R326.
Formulation :	Liquid in PBS containing 50% glycerol, 0.5% BSA and 0.02% sodium azide.
Source :	Rabbit
Dilution :	Western Blot: 1/500 - 1/2000. ELISA: 1/10000. Not yet tested in other applications.
Purification :	The antibody was affinity-purified from rabbit antiserum by affinity-chromatography using epitope-specific immunogen.
Concentration :	1 mg/ml
Storage_stability :	-20°C/1 year
Msds :	MSDS_Antibody.pdf
Other_name :	CTSA; PPGB; Lysosomal protective protein; Carboxypeptidase C; Carboxypeptidase L; Cathepsin A; Protective protein cathepsin A; PPCA; Protective protein for beta-galactosidase

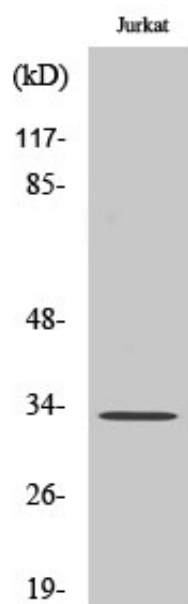


Molecular  
Weight :

33KD

---

## Product Images



Western Blot analysis of various cells using Cleaved-Cathepsin A 32k (R326) Polyclonal Antibody