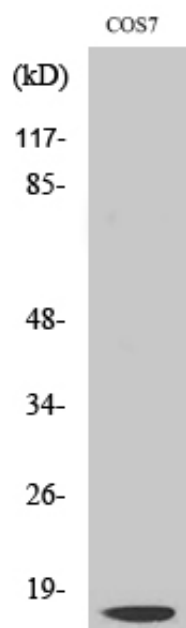




## Cleaved-Cathepsin D LC (G65) Polyclonal Antibody

Catalog_no :	AC0038
Applications :	WB,ELISA
Reactivity :	Human,Monkey
Category :	抗原抗体
Size :	100µg/50µg/20µg
Gene_name :	CTSD
Protein_name :	Cathepsin D
Humangene_id :	<a href="#">1509</a>
Humanswissprot_no :	<a href="#">P07339</a>
Immunogen :	The antiserum was produced against synthesized peptide derived from human CATD. AA range:46-95
Specificity :	Cleaved-Cathepsin D LC (G65) Polyclonal Antibody detects endogenous levels of fragment of activated Cathepsin D LC protein resulting from cleavage adjacent to G65.
Formulation :	Liquid in PBS containing 50% glycerol, 0.5% BSA and 0.02% sodium azide.
Source :	Rabbit
Dilution :	Western Blot: 1/500 - 1/2000. ELISA: 1/20000. Not yet tested in other applications.
Purification :	The antibody was affinity-purified from rabbit antiserum by affinity-chromatography using epitope-specific immunogen.
Concentration :	1 mg/ml
Storage_stability :	-20°C/1 year
Msds :	<a href="#">MSDS_Antibody.pdf</a>
Other_name :	CTSD; CPSD; Cathepsin D
Molecular Weight :	17KD

## Product Images



Western Blot analysis of various cells using Cleaved-Cathepsin D LC (G65) Polyclonal Antibody