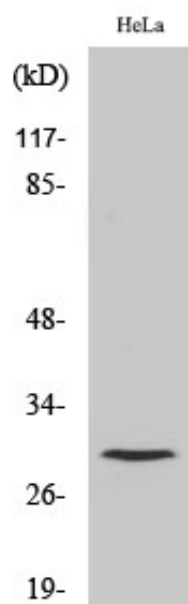




## Cleaved-Cathepsin L1 HC (T288) Polyclonal Antibody

Catalog_no :	AC0041
Applications :	WB,ELISA
Reactivity :	Human
Category :	抗原抗体
Size :	100µg/50µg/20µg
Gene_name :	CTSL1
Protein_name :	Cathepsin L1
Humangene_id	<a href="#">1514</a>
:	
Humanswissprot	<a href="#">P07711</a>
_no :	
Immunogen :	The antiserum was produced against synthesized peptide derived from human CATL1. AA range:239-288
Specificity :	Cleaved-Cathepsin L1 HC (T288) Polyclonal Antibody detects endogenous levels of fragment of activated Cathepsin L1 HC protein resulting from cleavage adjacent to T288.
Formulation :	Liquid in PBS containing 50% glycerol, 0.5% BSA and 0.02% sodium azide.
Source :	Rabbit
Dilution :	Western Blot: 1/500 - 1/2000. ELISA: 1/10000. Not yet tested in other applications.
Purification :	The antibody was affinity-purified from rabbit antiserum by affinity-chromatography using epitope-specific immunogen.
Concentration :	1 mg/ml
Storage_stability	-20°C/1 year
:	
Msds :	MSDS_Antibody.pdf
Other_name :	CTSL1; CTSL; Cathepsin L1; Major excreted protein; MEP
Molecular Weight :	30KD

## Product Images



Western Blot analysis of various cells using Cleaved-Cathepsin L1 HC (T288) Polyclonal Antibody