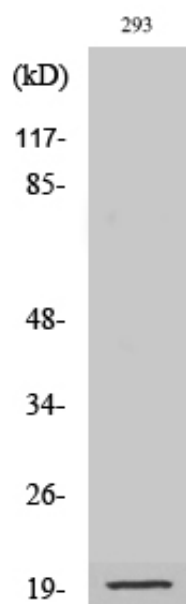


## Cleaved-Bad (D71) Polyclonal Antibody

Catalog_no :	AC0043
Applications :	WB,IHC-p,ELISA
Reactivity :	Mouse,Rat
Category :	抗原抗体
Size :	100µg/50µg/20µg
Gene_name :	BAD
Protein_name :	Bcl2 antagonist of cell death
Mousegene_id :	<a href="#">12015</a>
Ratgene_id :	<a href="#">64639</a>
Ratwissprot_no :	<a href="#">O35147</a>
Immunogen :	The antiserum was produced against synthesized peptide derived from mouse BAD. AA range:21-70
Specificity :	Cleaved-Bad (D71) Polyclonal Antibody detects endogenous levels of fragment of activated Bad protein resulting from cleavage adjacent to D71.
Formulation :	Liquid in PBS containing 50% glycerol, 0.5% BSA and 0.02% sodium azide.
Source :	Rabbit
Dilution :	Western Blot: 1/500 - 1/2000. Immunohistochemistry: 1/100 - 1/300. ELISA: 1/20000. Not yet tested in other applications.
Purification :	The antibody was affinity-purified from rabbit antiserum by affinity-chromatography using epitope-specific immunogen.
Concentration :	1 mg/ml
Storage_stability :	-20°C/1 year
Msds :	MSDS_Antibody.pdf
Other_name :	BAD; BBC6; BCL2L8; Bcl2 antagonist of cell death; BAD; Bcl-2-binding component 6; Bcl-2-like protein 8; Bcl2-L-8; Bcl-XL/Bcl-2-associated death promoter
Molecular Weight :	20KD

## Product Images



Western Blot analysis of various cells using Cleaved-Bad (D71) Polyclonal Antibody