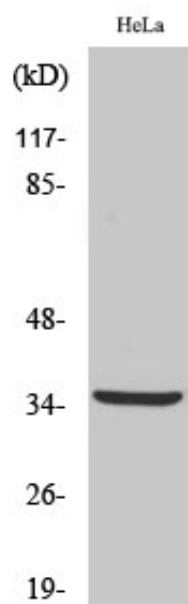


## Cleaved-Cathepsin L2 (L114) Polyclonal Antibody

Catalog_no :	AC0045
Applications :	WB,ELISA
Reactivity :	Human,Monkey
Category :	抗原抗体
Size :	100µg/50µg/20µg
Gene_name :	CTSL2
Protein_name :	Cathepsin L2
Humangene_id :	<a href="#">1515</a>
Humanswissprot_no :	<a href="#">O60911</a>
Immunogen :	The antiserum was produced against synthesized peptide derived from human CATL2. AA range:95-144
Specificity :	Cleaved-Cathepsin L2 (L114) Polyclonal Antibody detects endogenous levels of fragment of activated Cathepsin L2 protein resulting from cleavage adjacent to L114.
Formulation :	Liquid in PBS containing 50% glycerol, 0.5% BSA and 0.02% sodium azide.
Source :	Rabbit
Dilution :	Western Blot: 1/500 - 1/2000. ELISA: 1/20000. Not yet tested in other applications.
Purification :	The antibody was affinity-purified from rabbit antiserum by affinity-chromatography using epitope-specific immunogen.
Concentration :	1 mg/ml
Storage_stability :	-20°C/1 year
Msds :	<a href="#">MSDS_Antibody.pdf</a>
Other_name :	CTSL2; CATL2; CTSU; CTSV; Cathepsin L2; Cathepsin U; Cathepsin V
Molecular Weight :	37KD

## Product Images



Western Blot analysis of various cells using Cleaved-Cathepsin L2 (L114) Polyclonal Antibody