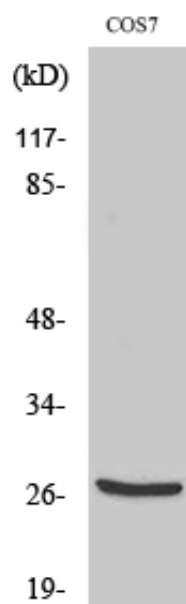


Cleaved-Cathepsin Z (L62) Polyclonal Antibody

Catalog_no :	AC0046
Applications :	WB,ELISA
Reactivity :	Human,Monkey
Category :	抗原抗体
Size :	100µg/50µg/20µg
Gene_name :	CTSZ
Protein_name :	Cathepsin Z
Humangene_id :	1522
Humanswissprot_no :	Q9UBR2
Immunogen :	The antiserum was produced against synthesized peptide derived from human CATZ. AA range:43-92
Specificity :	Cleaved-Cathepsin Z (L62) Polyclonal Antibody detects endogenous levels of fragment of activated Cathepsin Z protein resulting from cleavage adjacent to L62.
Formulation :	Liquid in PBS containing 50% glycerol, 0.5% BSA and 0.02% sodium azide.
Source :	Rabbit
Dilution :	Western Blot: 1/500 - 1/2000. ELISA: 1/5000. Not yet tested in other applications.
Purification :	The antibody was affinity-purified from rabbit antiserum by affinity-chromatography using epitope-specific immunogen.
Concentration :	1 mg/ml
Storage_stability :	-20°C/1 year
Msds :	MSDS_Antibody.pdf
Other_name :	CTSZ; Cathepsin Z; Cathepsin P; Cathepsin X
Molecular Weight :	27KD

Product Images



Western Blot analysis of various cells using Cleaved-Cathepsin Z (L62) Polyclonal Antibody