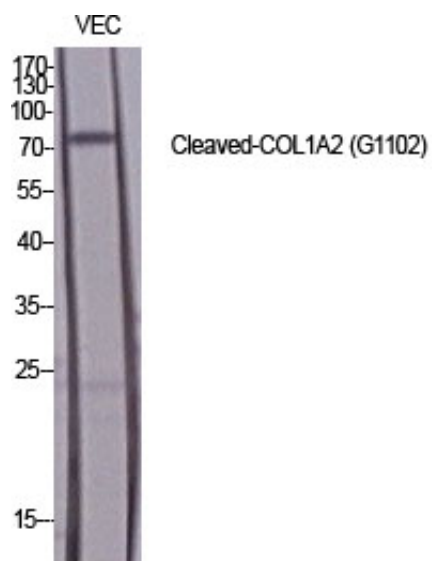


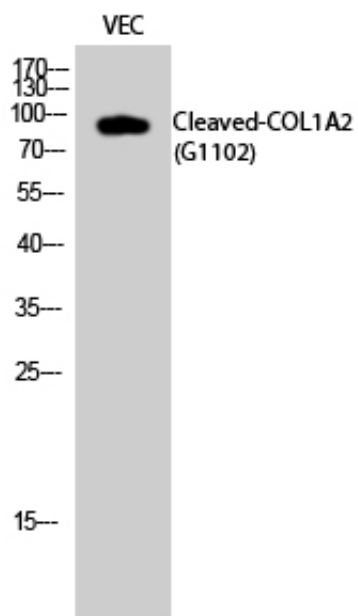
Cleaved-COL1A2 (G1102) Polyclonal Antibody

Catalog_no :	AC0049
Applications :	WB,ELISA
Reactivity :	Human
Category :	抗原抗体
Size :	100µg/50µg/20µg
Gene_name :	COL1A2
Protein_name :	Collagen alpha-2(I) chain
Humangene_id :	1278
Humanswissprot_no :	P08123
Immunogen :	The antiserum was produced against synthesized peptide derived from human Collagen I alpha2. AA range:1053-1102
Specificity :	Cleaved-COL1A2 (G1102) Polyclonal Antibody detects endogenous levels of fragment of activated COL1A2 protein resulting from cleavage adjacent to G1102.
Formulation :	Liquid in PBS containing 50% glycerol, 0.5% BSA and 0.02% sodium azide.
Source :	Rabbit
Dilution :	Western Blot: 1/500 - 1/2000. ELISA: 1/10000. Not yet tested in other applications.
Purification :	The antibody was affinity-purified from rabbit antiserum by affinity-chromatography using epitope-specific immunogen.
Concentration :	1 mg/ml
Storage_stability :	-20°C/1 year
Msds :	MSDS_Antibody.pdf
Other_name :	COL1A2; Collagen alpha-2(I) chain; Alpha-2 type I collagen
Molecular Weight :	92KD

Product Images



Western Blot analysis of various cells using Cleaved-COL1A2 (G1102) Polyclonal Antibody diluted at 1 : 1000



Western Blot analysis of VEC cells using Cleaved-COL1A2 (G1102) Polyclonal Antibody diluted at 1 : 1000