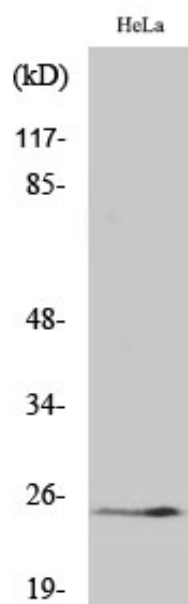


Cleaved-KLK11 (I54) Polyclonal Antibody

Catalog_no :	AC0055
Applications :	WB,ELISA
Reactivity :	Human
Category :	抗原抗体
Size :	100µg/50µg/20µg
Gene_name :	KLK11
Protein_name :	Kallikrein-11
Humangene_id :	11012
Humanswissprot_no :	Q9UBX7
Immunogen :	The antiserum was produced against synthesized peptide derived from human Kallikrein-11. AA range:35-84
Specificity :	Cleaved-KLK11 (I54) Polyclonal Antibody detects endogenous levels of fragment of activated KLK11 protein resulting from cleavage adjacent to I54.
Formulation :	Liquid in PBS containing 50% glycerol, 0.5% BSA and 0.02% sodium azide.
Source :	Rabbit
Dilution :	Western Blot: 1/500 - 1/2000. ELISA: 1/10000. Not yet tested in other applications.
Purification :	The antibody was affinity-purified from rabbit antiserum by affinity-chromatography using epitope-specific immunogen.
Concentration :	1 mg/ml
Storage_stability :	-20°C/1 year
Msds :	MSDS_Antibody.pdf
Other_name :	KLK11; PRSS20; TLSP; Kallikrein-11; hK11; Hippostasin; Serine protease 20; Trypsin-like protease
Molecular Weight :	25KD

Product Images



Western Blot analysis of various cells using Cleaved-KLK11 (I54) Polyclonal Antibody