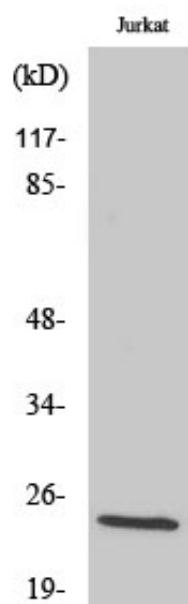




Cleaved-KLK8 (V33) Polyclonal Antibody

Catalog_no :	AC0056
Applications :	WB,ELISA
Reactivity :	Human
Category :	抗原抗体
Size :	100µg/50µg/20µg
Gene_name :	KLK8
Protein_name :	Kallikrein-8
Humangene_id :	11202
Humanswissprot_no :	O60259
Immunogen :	The antiserum was produced against synthesized peptide derived from human Neuropsin. AA range:14-63
Specificity :	Cleaved-KLK8 (V33) Polyclonal Antibody detects endogenous levels of fragment of activated KLK8 protein resulting from cleavage adjacent to V33.
Formulation :	Liquid in PBS containing 50% glycerol, 0.5% BSA and 0.02% sodium azide.
Source :	Rabbit
Dilution :	Western Blot: 1/500 - 1/2000. ELISA: 1/10000. Not yet tested in other applications.
Purification :	The antibody was affinity-purified from rabbit antiserum by affinity-chromatography using epitope-specific immunogen.
Concentration :	1 mg/ml
Storage_stability :	-20°C/1 year
Msds :	MSDS_Antibody.pdf
Other_name :	KLK8; NRPN; PRSS19; TADG14; Kallikrein-8; hK8; Neuropsin; NP; Ovasin; Serine protease 19; Serine protease TADG-14; Tumor-associated differentially expressed gene 14 protein
Molecular Weight :	24KD

Product Images



Western Blot analysis of various cells using Cleaved-KLK8 (V33) Polyclonal Antibody