

Cleaved-Lamin A (D230) Polyclonal Antibody

Catalog_no :	AC0057
Applications :	WB,IHC-p,ELISA
Reactivity :	Human,Mouse,Rat
Category :	抗原抗体
Size :	100µg/50µg/20µg
Gene_name :	LMNA
Protein_name :	Prelamin-A/C
Humangene_id	4000
:	
Humanswissprot	P02545
_no :	
Mousegene_id :	16905
Mouseswissprot	P48678
_no :	
Ratgene_id :	60374
Ratswissprot_no	P48679
:	
Immunogen :	The antiserum was produced against synthesized peptide derived from human Lamin A. AA range:181-230
Specificity :	Cleaved-Lamin A (D230) Polyclonal Antibody detects endogenous levels of fragment of activated Lamin A protein resulting from cleavage adjacent to D230.
Formulation :	Liquid in PBS containing 50% glycerol, 0.5% BSA and 0.02% sodium azide.
Source :	Rabbit
Dilution :	Western Blot: 1/500 - 1/2000. Immunohistochemistry: 1/100 - 1/300. ELISA: 1/10000. Not yet tested in other applications.
Purification :	The antibody was affinity-purified from rabbit antiserum by affinity-chromatography using epitope-specific immunogen.
Concentration :	1 mg/ml
Storage_stability	-20°C/1 year
:	

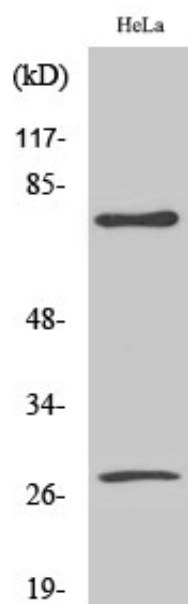


MsdS : MSDS_Antibody.pdf

Other_name : LMNA; LMN1; Prelamin-A/C

Molecular Weight : 28+75KD

Product Images



Western Blot analysis of various cells using Cleaved-Lamin A (D230) Polyclonal Antibody