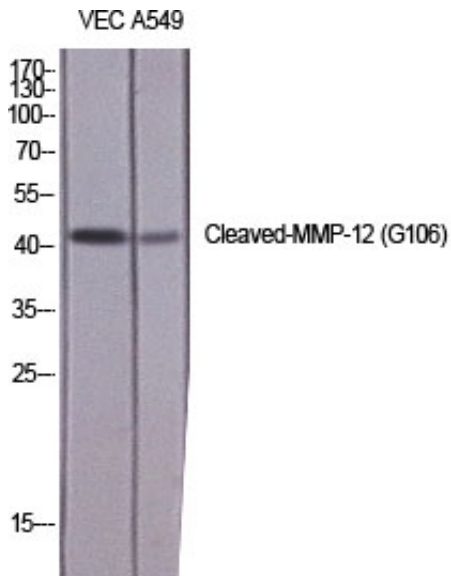




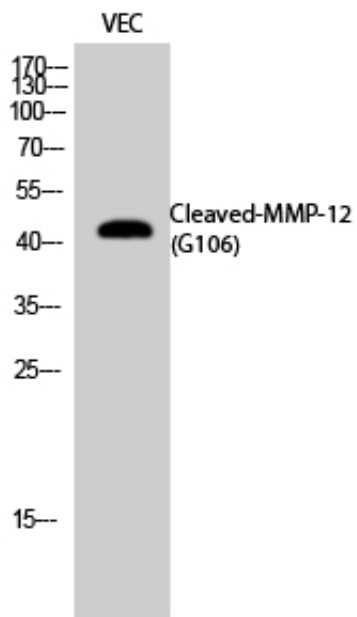
Cleaved-MMP-12 (G106) Polyclonal Antibody

| | |
|---------------------|---|
| Catalog_no : | AC0060 |
| Applications : | WB,ELISA |
| Reactivity : | Human |
| Category : | 抗原抗体 |
| Size : | 100µg/50µg/20µg |
| Gene_name : | MMP12 |
| Protein_name : | Macrophage metalloelastase |
| Humangene_id : | 4321 |
| Humanswissprot_no : | P39900 |
| Immunogen : | The antiserum was produced against synthesized peptide derived from human MMP12. AA range:87-136 |
| Specificity : | Cleaved-MMP-12 (G106) Polyclonal Antibody detects endogenous levels of fragment of activated MMP-12 protein resulting from cleavage adjacent to G106. |
| Formulation : | Liquid in PBS containing 50% glycerol, 0.5% BSA and 0.02% sodium azide. |
| Source : | Rabbit |
| Dilution : | Western Blot: 1/500 - 1/2000. ELISA: 1/20000. Not yet tested in other applications. |
| Purification : | The antibody was affinity-purified from rabbit antiserum by affinity-chromatography using epitope-specific immunogen. |
| Concentration : | 1 mg/ml |
| Storage_stability : | -20°C/1 year |
| Msds : | MSDS_Antibody.pdf |
| Other_name : | MMP12; HME; Macrophage metalloelastase; MME; Macrophage elastase; ME; hME; Matrix metalloproteinase-12; MMP-12 |
| Molecular Weight : | 42KD |

Product Images



Western Blot analysis of various cells using Cleaved-MMP-12 (G106) Polyclonal Antibody diluted at 1 : 1000



Western Blot analysis of VEC cells using Cleaved-MMP-12 (G106) Polyclonal Antibody diluted at 1 : 1000