

## Cleaved-MMP-14 (Y112) Polyclonal Antibody

Catalog_no :	<u>AC0061</u>
Applications :	<u>WB,ELISA</u>
Reactivity :	<u>Human,Mouse,Rat</u>
Category :	<u>抗原抗体</u>
Size :	<u>100µg/50µg/20µg</u>
Gene_name :	<u>MMP14</u>
Protein_name :	<u>Matrix metalloproteinase-14</u>
Humangene_id	<u><a href="#">4323</a></u>
:	<u></u>
Humanswissprot	<u><a href="#">P50281</a></u>
_no :	<u></u>
Mousegene_id :	<u><a href="#">17387</a></u>
Mouseswissprot	<u><a href="#">P53690</a></u>
_no :	<u></u>
Ratgene_id :	<u><a href="#">81707</a></u>
Ratswissprot_no	<u><a href="#">Q10739</a></u>
:	<u></u>
Immunogen :	<u>The antiserum was produced against synthesized peptide derived from human MMP14. AA range:93-142</u>
Specificity :	<u>Cleaved-MMP-14 (Y112) Polyclonal Antibody detects endogenous levels of fragment of activated MMP-14 protein resulting from cleavage adjacent to Y112.</u>
Formulation :	<u>Liquid in PBS containing 50% glycerol, 0.5% BSA and 0.02% sodium azide.</u>
Source :	<u>Rabbit</u>
Dilution :	<u>Western Blot: 1/500 - 1/2000. ELISA: 1/20000. Not yet tested in other applications.</u>
Purification :	<u>The antibody was affinity-purified from rabbit antiserum by affinity-chromatography using epitope-specific immunogen.</u>
Concentration :	<u>1 mg/ml</u>
Storage_stability	<u>-20°C/1 year</u>
:	<u></u>
Msds :	<u>MSDS_Antibody.pdf</u>



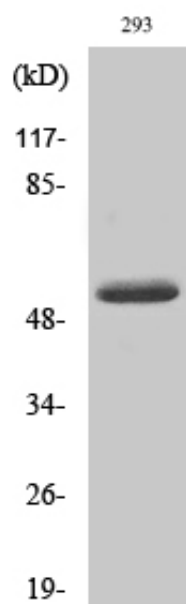
Other\_name : MMP14; Matrix metalloproteinase-14; MMP-14; MMP-X1; Membrane-type matrix metalloproteinase 1; MT-MMP 1; MTMMP1; Membrane-type-1 matrix metalloproteinase; MT1-MMP; MT1MMP

---

Molecular Weight : 53KD

---

## Product Images



Western Blot analysis of various cells using Cleaved-MMP-14 (Y112) Polyclonal Antibody