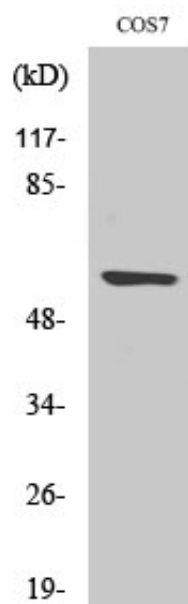


## Cleaved-MMP-15 (Y132) Polyclonal Antibody

Catalog_no :	AC0062
Applications :	WB,ELISA
Reactivity :	Human,Monkey
Category :	抗原抗体
Size :	100µg/50µg/20µg
Gene_name :	MMP15
Protein_name :	Matrix metalloproteinase-15
Humangene_id :	<a href="#">4324</a>
Humanswissprot_no :	<a href="#">P51511</a>
Immunogen :	The antiserum was produced against synthesized peptide derived from human MMP15. AA range:113-162
Specificity :	Cleaved-MMP-15 (Y132) Polyclonal Antibody detects endogenous levels of fragment of activated MMP-15 protein resulting from cleavage adjacent to Y132.
Formulation :	Liquid in PBS containing 50% glycerol, 0.5% BSA and 0.02% sodium azide.
Source :	Rabbit
Dilution :	Western Blot: 1/500 - 1/2000. ELISA: 1/10000. Not yet tested in other applications.
Purification :	The antibody was affinity-purified from rabbit antiserum by affinity-chromatography using epitope-specific immunogen.
Concentration :	1 mg/ml
Storage_stability :	-20°C/1 year
Msds :	MSDS_Antibody.pdf
Other_name :	MMP15; Matrix metalloproteinase-15; MMP-15; Membrane-type matrix metalloproteinase 2; MT-MMP 2; MTMMP2; Membrane-type-2 matrix metalloproteinase; MT2-MMP; MT2MMP; SMCP-2
Molecular Weight :	61KD

## Product Images



Western Blot analysis of various cells using Cleaved-MMP-15 (Y132) Polyclonal Antibody