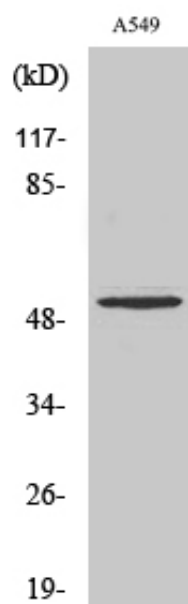


Cleaved-MMP-17 (Q129) Polyclonal Antibody

Catalog_no :	AC0063
Applications :	WB,ELISA
Reactivity :	Human
Category :	抗原抗体
Size :	100µg/50µg/20µg
Gene_name :	MMP17
Protein_name :	Matrix metalloproteinase-17
Humangene_id :	4326
Humanswissprot_no :	Q9ULZ9
Immunogen :	The antiserum was produced against synthesized peptide derived from human MMP17. AA range:110-159
Specificity :	Cleaved-MMP-17 (Q129) Polyclonal Antibody detects endogenous levels of fragment of activated MMP-17 protein resulting from cleavage adjacent to Q129.
Formulation :	Liquid in PBS containing 50% glycerol, 0.5% BSA and 0.02% sodium azide.
Source :	Rabbit
Dilution :	Western Blot: 1/500 - 1/2000. ELISA: 1/10000. Not yet tested in other applications.
Purification :	The antibody was affinity-purified from rabbit antiserum by affinity-chromatography using epitope-specific immunogen.
Concentration :	1 mg/ml
Storage_stability :	-20°C/1 year
Msds :	MSDS_Antibody.pdf
Other_name :	MMP17; MT4MMP; Matrix metalloproteinase-17; MMP-17; Membrane-type matrix metalloproteinase 4; MT-MMP 4; MTMMP4; Membrane-type-4 matrix metalloproteinase; MT4-MMP; MT4MMP
Molecular Weight :	53KD

Product Images



Western Blot analysis of various cells using Cleaved-MMP-17 (Q129) Polyclonal Antibody