

Cleaved-MMP-23 (Y79) Polyclonal Antibody

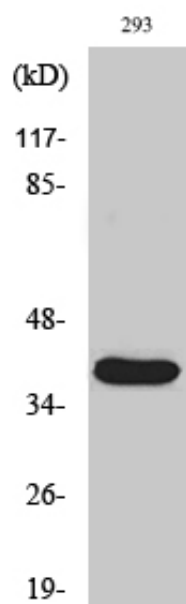
Catalog_no :	AC0064
Applications :	WB,ELISA
Reactivity :	Human,Mouse,Rat
Category :	抗原抗体
Size :	100µg/50µg/20µg
Gene_name :	MMP23A
Protein_name :	Matrix metalloproteinase-23
Humangene_id :	8510
Humanswissprot_no :	O75900
Mousegene_id :	26561
Mouseswissprot_no :	O88676
Ratgene_id :	94339
Ratswissprot_no :	O88272
Immunogen :	The antiserum was produced against synthesized peptide derived from human MMP23. AA range:60-109
Specificity :	Cleaved-MMP-23 (Y79) Polyclonal Antibody detects endogenous levels of fragment of activated MMP-23 protein resulting from cleavage adjacent to Y79.
Formulation :	Liquid in PBS containing 50% glycerol, 0.5% BSA and 0.02% sodium azide.
Source :	Rabbit
Dilution :	Western Blot: 1/500 - 1/2000. ELISA: 1/20000. Not yet tested in other applications.
Purification :	The antibody was affinity-purified from rabbit antiserum by affinity-chromatography using epitope-specific immunogen.
Concentration :	1 mg/ml
Storage_stability :	-20°C/1 year
Msds :	MSDS_Antibody.pdf



Other_name : MMP23A; MMP21; MMP23B; MMP21; MMP22; Matrix metalloproteinase-23; MMP-23; Femalysin; MIFR-1; Matrix metalloproteinase-21; MMP-21; Matrix metalloproteinase-22; MMP-22

Molecular Weight : 36KD

Product Images



Western Blot analysis of various cells using Cleaved-MMP-23 (Y79) Polyclonal Antibody