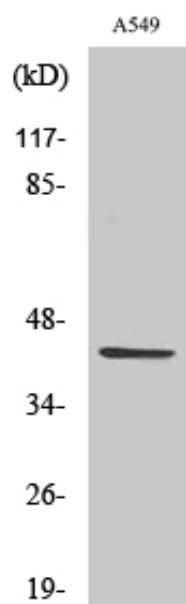


Cleaved-MMP-3 (F100) Polyclonal Antibody

Catalog_no :	AC0066
Applications :	WB,ELISA
Reactivity :	Human
Category :	抗原抗体
Size :	100µg/50µg/20µg
Gene_name :	MMP3
Protein_name :	Stromelysin-1
Humangene_id :	4314
Humanswissprot_no :	P08254
Immunogen :	The antiserum was produced against synthesized peptide derived from human MMP3. AA range:81-130
Specificity :	Cleaved-MMP-3 (F100) Polyclonal Antibody detects endogenous levels of fragment of activated MMP-3 protein resulting from cleavage adjacent to F100.
Formulation :	Liquid in PBS containing 50% glycerol, 0.5% BSA and 0.02% sodium azide.
Source :	Rabbit
Dilution :	Western Blot: 1/500 - 1/2000. ELISA: 1/20000. Not yet tested in other applications.
Purification :	The antibody was affinity-purified from rabbit antiserum by affinity-chromatography using epitope-specific immunogen.
Concentration :	1 mg/ml
Storage_stability :	-20°C/1 year
Msds :	MSDS_Antibody.pdf
Other_name :	MMP3; STMY1; Stromelysin-1; SL-1; Matrix metalloproteinase-3; MMP-3; Transin-1
Molecular Weight :	43KD

Product Images



Western Blot analysis of various cells using Cleaved-MMP-3 (F100) Polyclonal Antibody