



## Cleaved-Notch 1 (V1754) Polyclonal Antibody

Catalog_no :	AC0067
Applications :	WB,IF,IHC-p,ELISA
Reactivity :	Human,Mouse,Rat
Category :	抗原抗体
Size :	100µg/50µg/20µg
Gene_name :	NOTCH1
Protein_name :	Neurogenic locus notch homolog protein 1
Humangene_id :	<a href="#">4851</a>
Humanswissprot_no :	<a href="#">P46531</a>
Mousegene_id :	<a href="#">18128</a>
Mouseswissprot_no :	<a href="#">Q01705</a>
Ratswissprot_no :	<a href="#">Q07008</a>
Immunogen :	The antiserum was produced against synthesized peptide derived from human Notch 1. AA range:1735-1784
Specificity :	Cleaved-Notch 1 (V1754) Polyclonal Antibody detects endogenous levels of fragment of activated Notch 1 protein resulting from cleavage adjacent to V1754.
Formulation :	Liquid in PBS containing 50% glycerol, 0.5% BSA and 0.02% sodium azide.
Source :	Rabbit
Dilution :	WB 1:500-2000, IHC-p 1:50-300, IF 1:50-300
Purification :	The antibody was affinity-purified from rabbit antiserum by affinity-chromatography using epitope-specific immunogen.
Concentration :	1 mg/ml
Storage_stability :	-20°C/1 year
Msds :	<a href="#">MSDS_Antibody.pdf</a>
Other_name :	NOTCH1; TAN1; Neurogenic locus notch homolog protein 1; Notch 1; hN1; Translocation-

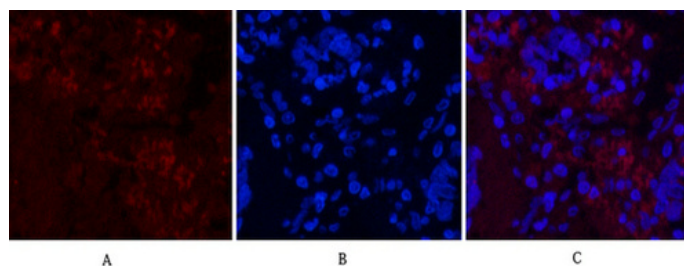


associated notch protein TAN-1

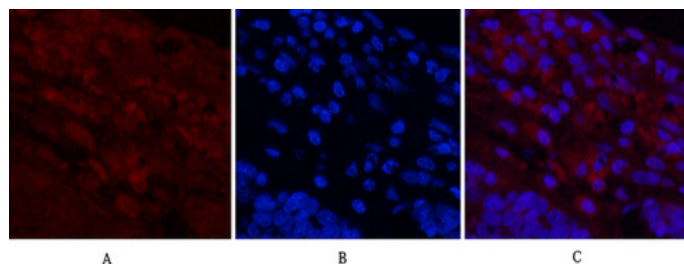
Molecular  
Weight :

110KD

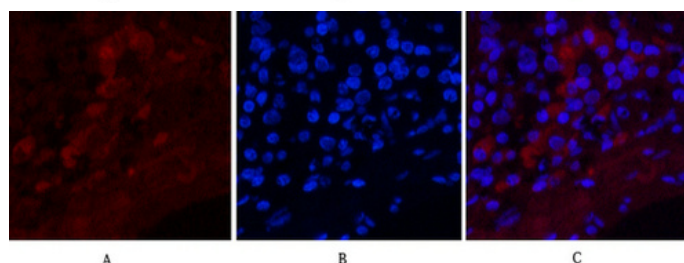
## Product Images



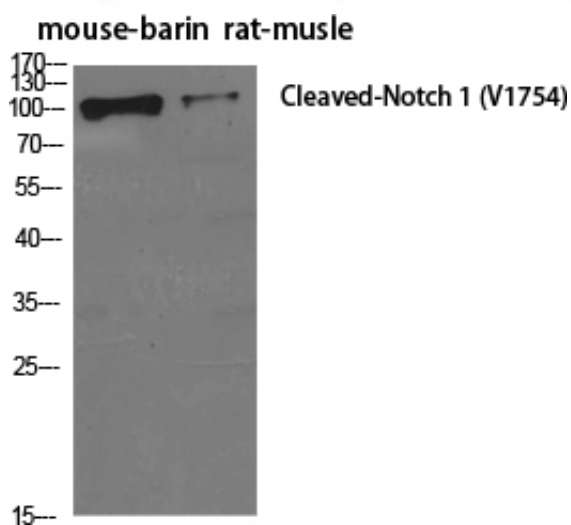
Immunofluorescence analysis of Human-lung-cancer tissue. 1, Cleaved-Notch 1 (V1754) Polyclonal Antibody (red) was diluted at 1:200 (4°C, overnight). 2, Cy3 labeled Secondary antibody was diluted at 1:300 (room temperature, 50 min). 3, Picture B: DAPI (blue) 10 min. Picture A: Target. Picture B: DAPI. Picture C: merge of A+B



Immunofluorescence analysis of Human-lung-cancer tissue. 1, Cleaved-Notch 1 (V1754) Polyclonal Antibody (red) was diluted at 1:200 (4°C, overnight). 2, Cy3 labeled Secondary antibody was diluted at 1:300 (room temperature, 50 min). 3, Picture B: DAPI (blue) 10 min. Picture A: Target. Picture B: DAPI. Picture C: merge of A+B



Immunofluorescence analysis of Human-lung-cancer tissue. 1, Cleaved-Notch 1 (V1754) Polyclonal Antibody (red) was diluted at 1:200 (4°C, overnight). 2, Cy3 labeled Secondary antibody was diluted at 1:300 (room temperature, 50 min). 3, Picture B: DAPI (blue) 10 min. Picture A: Target. Picture B: DAPI. Picture C: merge of A+B



Western Blot analysis of various cells using Cleaved-Notch 1 (V1754) Polyclonal Antibody diluted at 1 : 500

Western Blot analysis of KB cells using Cleaved-Notch 1 (V1754) Polyclonal Antibody diluted at 1 : 500

