

Cleaved-Notch 2 (A1734) Polyclonal Antibody

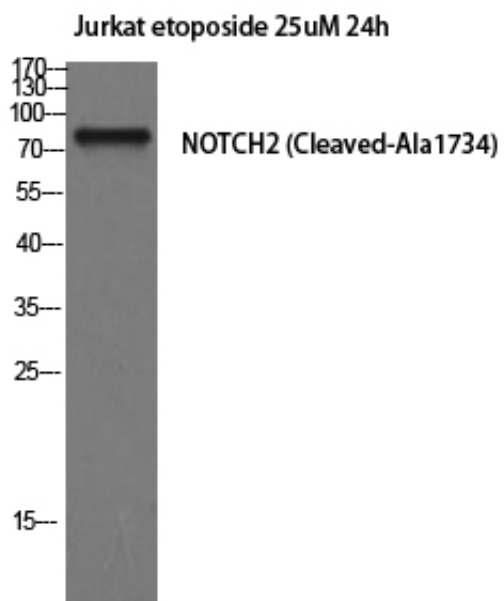
Catalog_no :	AC0068
Applications :	WB,ELISA
Reactivity :	Human,Mouse,Rat
Category :	抗原抗体
Size :	100µg/50µg/20µg
Gene_name :	NOTCH2
Protein_name :	Neurogenic locus notch homolog protein 2
Humangene_id	4853
:	
Humanswissprot	Q04721
_no :	
Mousegene_id :	18129
Mouseswissprot	O35516
_no :	
Ratgene_id :	29492
Ratswissprot_no	Q9QW30
:	
Immunogen :	The antiserum was produced against synthesized peptide derived from human NOTCH2. AA range:1715-1764
Specificity :	Cleaved-Notch 2 (A1734) Polyclonal Antibody detects endogenous levels of fragment of activated Notch 2 protein resulting from cleavage adjacent to A1734.
Formulation :	Liquid in PBS containing 50% glycerol, 0.5% BSA and 0.02% sodium azide.
Source :	Rabbit
Dilution :	Western Blot: 1/500 - 1/2000. ELISA: 1/10000. Not yet tested in other applications.
Purification :	The antibody was affinity-purified from rabbit antiserum by affinity-chromatography using epitope-specific immunogen.
Concentration :	1 mg/ml
Storage_stability	-20°C/1 year
:	
Msds :	MSDS_Antibody.pdf



Other_name : NOTCH2; Neurogenic locus notch homolog protein 2; Notch 2; hN2

Molecular Weight : 79KD

Product Images



Western Blot analysis of Jurkat cells using Cleaved-Notch 2 (A1734) Polyclonal Antibody diluted at 1 : 2000