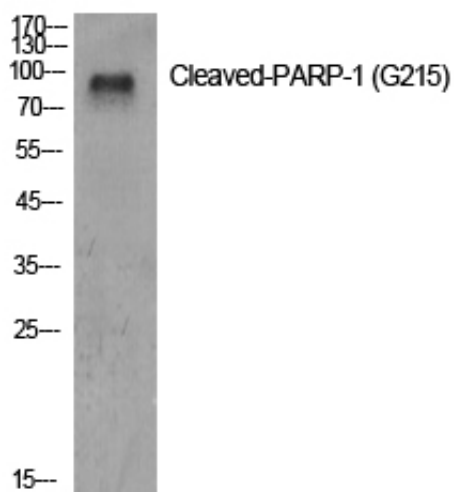


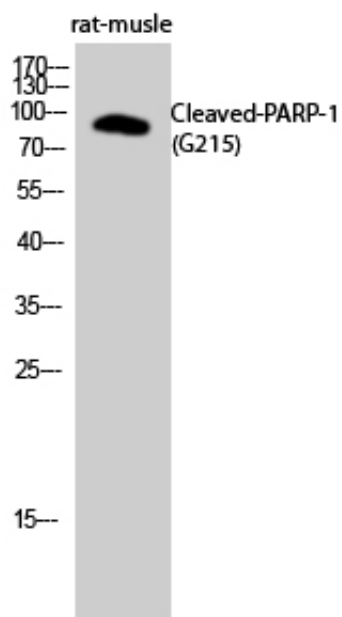
Cleaved-PARP-1 (G215) Polyclonal Antibody

Catalog_no :	AC0073
Applications :	WB,ELISA
Reactivity :	Human,Mouse,Rat
Category :	抗原抗体
Size :	100µg/50µg/20µg
Gene_name :	PARP1
Protein_name :	Poly [ADP-ribose] polymerase 1
Humangene_id :	142
Humanswissprot_no :	P09874
Immunogen :	The antiserum was produced against synthesized peptide derived from human PARP. AA range:196-245
Specificity :	Cleaved-PARP-1 (G215) Polyclonal Antibody detects endogenous levels of fragment of activated PARP-1 protein resulting from cleavage adjacent to G215.
Formulation :	Liquid in PBS containing 50% glycerol, 0.5% BSA and 0.02% sodium azide.
Source :	Rabbit
Dilution :	Western Blot: 1/500 - 1/2000. ELISA: 1/5000. Not yet tested in other applications.
Purification :	The antibody was affinity-purified from rabbit antiserum by affinity-chromatography using epitope-specific immunogen.
Concentration :	1 mg/ml
Storage_stability :	-20°C/1 year
Msds :	MSDS_Antibody.pdf
Other_name :	PARP1; ADPRT; PPOL; Poly [ADP-ribose] polymerase 1; PARP-1; ADP-ribosyltransferase diphtheria toxin-like 1; ARTD1; NAD(+) ADP-ribosyltransferase 1; ADPRT 1; Poly[ADP-ribose] synthase 1
Molecular Weight :	89KD

Product Images



Western Blot analysis of various cells using Cleaved-PARP-1 (G215) Polyclonal Antibody diluted at 1 : 500



Western Blot analysis of rat-muscle cells using Cleaved-PARP-1 (G215) Polyclonal Antibody diluted at 1 : 500