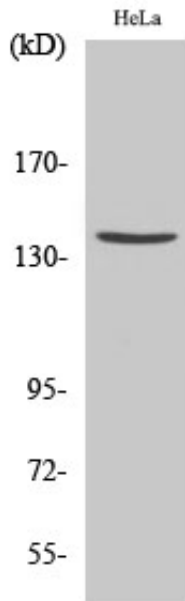


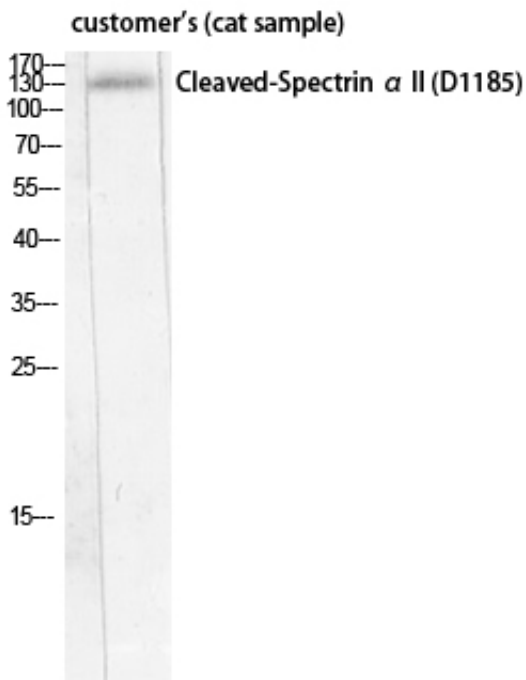
Cleaved-Spectrin α II (D1185) Polyclonal Antibody

Catalog_no :	AC0074
Applications :	WB,ELISA
Reactivity :	Human
Category :	抗原抗体
Size :	100 μ g/50 μ g/20 μ g
Gene_name :	SPTAN1
Protein_name :	Spectrin alpha chain non-erythrocytic 1
Humangene_id :	6709
Humanswissprot_no :	Q13813
Immunogen :	The antiserum was produced against synthesized peptide derived from human SPTA2. AA range:1136-1185
Specificity :	Cleaved-Spectrin α II (D1185) Polyclonal Antibody detects endogenous levels of fragment of activated Spectrin α II protein resulting from cleavage adjacent to D1185.
Formulation :	Liquid in PBS containing 50% glycerol, 0.5% BSA and 0.02% sodium azide.
Source :	Rabbit
Dilution :	Western Blot: 1/500 - 1/2000. ELISA: 1/10000. Not yet tested in other applications.
Purification :	The antibody was affinity-purified from rabbit antiserum by affinity-chromatography using epitope-specific immunogen.
Concentration :	1 mg/ml
Storage_stability :	-20°C/1 year
Msds :	MSDS_Antibody.pdf
Other_name :	SPTAN1; NEAS; SPTA2; Spectrin alpha chain; non-erythrocytic 1; Alpha-II spectrin; Fodrin alpha chain; Spectrin, non-erythroid alpha subunit
Molecular Weight :	137KD

Product Images



Western Blot analysis of various cells using Cleaved-Spectrin α II (D1185) Polyclonal Antibody diluted at 1 : 500



Western Blot analysis of customer's (cat sample) using Cleaved-Spectrin α II (D1185) Polyclonal Antibody diluted at 1 : 500