

Cleaved-SUMO-2/3 (G93) Polyclonal Antibody

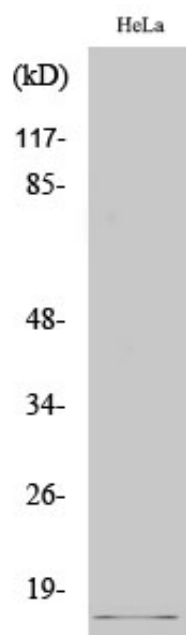
Catalog_no :	AC0075
Applications :	WB,ELISA
Reactivity :	Human,Mouse,Rat
Category :	抗原抗体
Size :	100µg/50µg/20µg
Gene_name :	SUMO2
Protein_name :	Small ubiquitin-related modifier 2
Humangene_id :	6613
Humanswissprot_no :	P61956
Mousegene_id :	170930
Mouseswissprot_no :	P61957
Ratgene_id :	690244
Ratswissprot_no :	P61959
Immunogen :	The antiserum was produced against synthesized peptide derived from human SUMO2/3. AA range:44-93
Specificity :	Cleaved-SUMO-2/3 (G93) Polyclonal Antibody detects endogenous levels of fragment of activated SUMO-2/3 protein resulting from cleavage adjacent to G93.
Formulation :	Liquid in PBS containing 50% glycerol, 0.5% BSA and 0.02% sodium azide.
Source :	Rabbit
Dilution :	Western Blot: 1/500 - 1/2000. ELISA: 1/20000. Not yet tested in other applications.
Purification :	The antibody was affinity-purified from rabbit antiserum by affinity-chromatography using epitope-specific immunogen.
Concentration :	1 mg/ml
Storage_stability :	-20°C/1 year
Msds :	MSDS_Antibody.pdf



Other_name : SUMO2; SMT3A; SMT3H2; Small ubiquitin-related modifier 2; SUMO-2; HSMT3; SMT3 homolog 2; SUMO-3; Sentrin-2; Ubiquitin-like protein SMT3A; Smt3A

Molecular Weight : 11KD

Product Images



Western Blot analysis of various cells using Cleaved-SUMO-2/3 (G93) Polyclonal Antibody