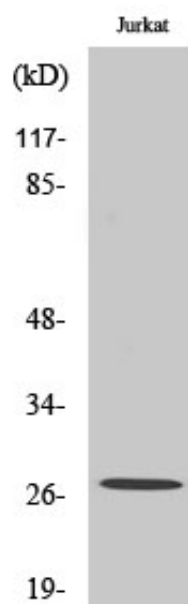




Cleaved-Tumstatin (P1426) Polyclonal Antibody

Catalog_no :	AC0078
Applications :	WB,ELISA
Reactivity :	Human,Monkey
Category :	抗原抗体
Size :	100µg/50µg/20µg
Gene_name :	COL4A3
Protein_name :	Collagen alpha-3(IV) chain
Humangene_id :	1285
Humanswissprot_no :	Q01955
Immunogen :	The antiserum was produced against synthesized peptide derived from human Collagen IV alpha3. AA range:1407-1456
Specificity :	Cleaved-Tumstatin (P1426) Polyclonal Antibody detects endogenous levels of fragment of activated Tumstatin protein resulting from cleavage adjacent to P1426.
Formulation :	Liquid in PBS containing 50% glycerol, 0.5% BSA and 0.02% sodium azide.
Source :	Rabbit
Dilution :	Western Blot: 1/500 - 1/2000. ELISA: 1/40000. Not yet tested in other applications.
Purification :	The antibody was affinity-purified from rabbit antiserum by affinity-chromatography using epitope-specific immunogen.
Concentration :	1 mg/ml
Storage_stability :	-20°C/1 year
Msds :	MSDS_Antibody.pdf
Other_name :	COL4A3; Collagen alpha-3(IV) chain; Goodpasture antigen
Molecular Weight :	27KD

Product Images



Western Blot analysis of various cells using Cleaved-Tumstatin (P1426) Polyclonal Antibody