



Ephrin-A5 Polyclonal Antibody

Catalog_no :	<u>AC0079</u>
Applications :	<u>WB,ELISA</u>
Reactivity :	<u>Human,Mouse,Rat</u>
Category :	<u>抗原抗体</u>
Size :	<u>100µg/50µg/20µg</u>
Gene_name :	<u>EFNA5</u>
Protein_name :	<u>Ephrin-A5</u>
Humangene_id	<u>1946</u>
:	
Humanswissprot	<u>P52803</u>
_no :	
Mousegene_id :	<u>13640</u>
Mouseswissprot	<u>O08543</u>
_no :	
Ratgene_id :	<u>116683</u>
Ratswissprot_no	<u>P97605</u>
:	
Immunogen :	<u>Synthesized peptide derived from Ephrin-A5 . at AA range: 130-210</u>
Specificity :	<u>Ephrin-A5 Polyclonal Antibody detects endogenous levels of Ephrin-A5 protein.</u>
Formulation :	<u>Liquid in PBS containing 50% glycerol, 0.5% BSA and 0.02% sodium azide.</u>
Source :	<u>Rabbit</u>
Dilution :	<u>Western Blot: 1/500 - 1/2000. ELISA: 1/40000. Not yet tested in other applications.</u>
Purification :	<u>The antibody was affinity-purified from rabbit antiserum by affinity-chromatography using epitope-specific immunogen.</u>
Concentration :	<u>1 mg/ml</u>
Storage_stability	<u>-20°C/1 year</u>
:	
Msds :	<u>MSDS_Antibody.pdf</u>
Other_name :	<u>EFNA5; EPLG7; LERK7; Ephrin-A5; AL-1; EPH-related receptor tyrosine kinase ligand 7;</u>

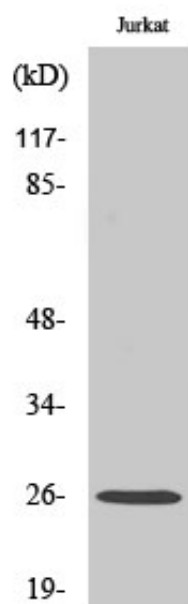


LERK-7

Molecular
Weight :

26KD

Product Images



Western Blot analysis of various cells using Ephrin-A5 Polyclonal Antibody