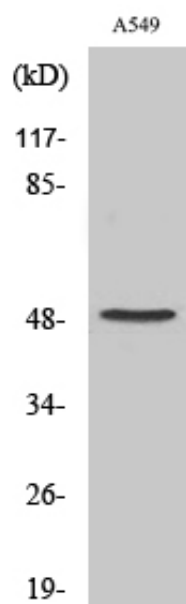




Cleaved-Factor X/ Factor X LC (A41) Polyclonal Antibody

Catalog_no :	AC0082
Applications :	WB,ELISA
Reactivity :	Human
Category :	抗原抗体
Size :	100µg/50µg/20µg
Gene_name :	F10
Protein_name :	Coagulation factor X
Humangene_id :	2159
Humanswissprot_no :	P00742
Immunogen :	The antiserum was produced against synthesized peptide derived from human FA10. AA range:22-71
Specificity :	Cleaved-Factor X/ Factor X LC (A41) Polyclonal Antibody detects endogenous levels of fragment of activated Factor X/ Factor X LC protein resulting from cleavage adjacent to A41.
Formulation :	Liquid in PBS containing 50% glycerol, 0.5% BSA and 0.02% sodium azide.
Source :	Rabbit
Dilution :	Western Blot: 1/500 - 1/2000. ELISA: 1/20000. Not yet tested in other applications.
Purification :	The antibody was affinity-purified from rabbit antiserum by affinity-chromatography using epitope-specific immunogen.
Concentration :	1 mg/ml
Storage_stability :	-20°C/1 year
Msds :	MSDS_Antibody.pdf
Other_name :	F10; Coagulation factor X; Stuart factor; Stuart-Prower factor
Molecular Weight :	50KD

Product Images



Western Blot analysis of various cells using Cleaved-Factor X/ Factor X LC (A41) Polyclonal Antibody