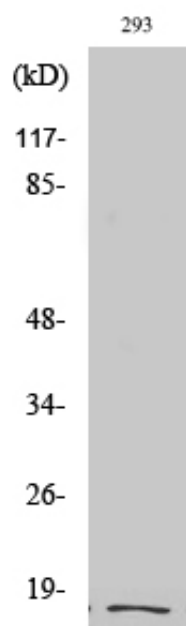


Cleaved-Integrin α 5 LC (E895) Polyclonal Antibody

Catalog_no :	AC0089
Applications :	WB,ELISA
Reactivity :	Human
Category :	抗原抗体
Size :	100 μ g/50 μ g/20 μ g
Gene_name :	ITGA5
Protein_name :	Integrin alpha-5
Humangene_id :	3678
Humanswissprot_no :	P08648
Immunogen :	The antiserum was produced against synthesized peptide derived from human ITGA5. AA range:876-925
Specificity :	Cleaved-Integrin α 5 LC (E895) Polyclonal Antibody detects endogenous levels of fragment of activated Integrin α 5 LC protein resulting from cleavage adjacent to E895.
Formulation :	Liquid in PBS containing 50% glycerol, 0.5% BSA and 0.02% sodium azide.
Source :	Rabbit
Dilution :	Western Blot: 1/500 - 1/2000. ELISA: 1/20000. Not yet tested in other applications.
Purification :	The antibody was affinity-purified from rabbit antiserum by affinity-chromatography using epitope-specific immunogen.
Concentration :	1 mg/ml
Storage_stability :	-20°C/1 year
Msds :	MSDS_Antibody.pdf
Other_name :	ITGA5; FNRA; Integrin alpha-5; CD49 antigen-like family member E; Fibronectin receptor subunit alpha; Integrin alpha-F; VLA-5; CD antigen CD49e
Molecular Weight :	18KD

Product Images



Western Blot analysis of various cells using Cleaved-Integrin $\alpha 5$ LC (E895) Polyclonal Antibody