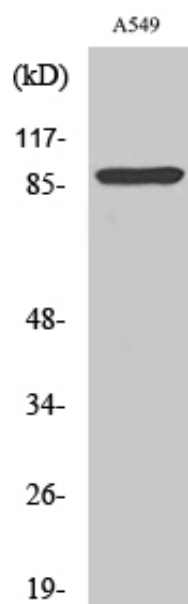




Cleaved-Integrin α V HC (K889) Polyclonal Antibody

Catalog_no :	AC0092
Applications :	WB,ELISA
Reactivity :	Human
Category :	抗原抗体
Size :	100 μ g/50 μ g/20 μ g
Gene_name :	ITGAV
Protein_name :	Integrin alpha-V
Humangene_id :	3685
Humanswissprot_no :	P06756
Immunogen :	The antiserum was produced against synthesized peptide derived from human ITGAV. AA range:840-889
Specificity :	Cleaved-Integrin α V HC (K889) Polyclonal Antibody detects endogenous levels of fragment of activated Integrin α V HC protein resulting from cleavage adjacent to K889.
Formulation :	Liquid in PBS containing 50% glycerol, 0.5% BSA and 0.02% sodium azide.
Source :	Rabbit
Dilution :	Western Blot: 1/500 - 1/2000. ELISA: 1/10000. Not yet tested in other applications.
Purification :	The antibody was affinity-purified from rabbit antiserum by affinity-chromatography using epitope-specific immunogen.
Concentration :	1 mg/ml
Storage_stability :	-20°C/1 year
Msds :	MSDS_Antibody.pdf
Other_name :	ITGAV; MSK8; VNRA; Integrin alpha-V; Vitronectin receptor subunit alpha; CD antigen CD51
Molecular Weight :	95KD

Product Images



Western Blot analysis of various cells using Cleaved-Integrin α V HC (K889) Polyclonal Antibody