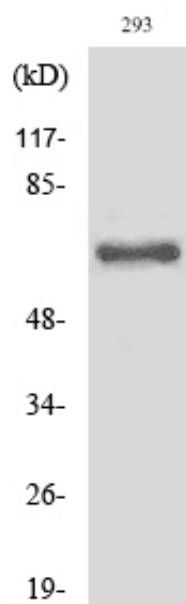


Cleaved-ITI-H2 (D702) Polyclonal Antibody

Catalog_no :	AC0094
Applications :	WB,ELISA
Reactivity :	Human
Category :	抗原抗体
Size :	100µg/50µg/20µg
Gene_name :	ITIH2
Protein_name :	Inter-alpha-trypsin inhibitor heavy chain H2
Humangene_id :	3698
Humanswissprot_no :	P19823
Immunogen :	The antiserum was produced against synthesized peptide derived from human ITIH2. AA range:653-702
Specificity :	Cleaved-ITI-H2 (D702) Polyclonal Antibody detects endogenous levels of fragment of activated ITI-H2 protein resulting from cleavage adjacent to D702.
Formulation :	Liquid in PBS containing 50% glycerol, 0.5% BSA and 0.02% sodium azide.
Source :	Rabbit
Dilution :	Western Blot: 1/500 - 1/2000. ELISA: 1/10000. Not yet tested in other applications.
Purification :	The antibody was affinity-purified from rabbit antiserum by affinity-chromatography using epitope-specific immunogen.
Concentration :	1 mg/ml
Storage_stability :	-20°C/1 year
Msds :	MSDS_Antibody.pdf
Other_name :	ITIH2; IGHEP2; Inter-alpha-trypsin inhibitor heavy chain H2; ITI heavy chain H2; ITI-HC2; Inter-alpha-inhibitor heavy chain 2; Inter-alpha-trypsin inhibitor complex component II; Serum-derived hyaluronan-associated protein; SHAP
Molecular Weight :	72KD

Product Images



Western Blot analysis of various cells using Cleaved-ITI-H2 (D702) Polyclonal Antibody