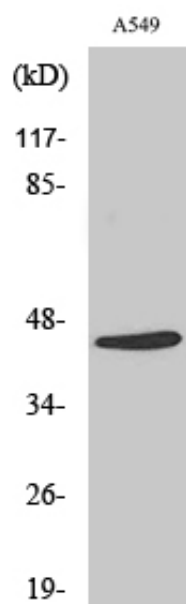


Cleaved-MASP-1 HC (R448) Polyclonal Antibody

| | |
|---------------------|--|
| Catalog_no : | AC0097 |
| Applications : | WB,ELISA |
| Reactivity : | Human |
| Category : | 抗原抗体 |
| Size : | 100µg/50µg/20µg |
| Gene_name : | MASP1 |
| Protein_name : | Mannan-binding lectin serine protease 1 |
| Humangene_id : | 5648 |
| Humanswissprot_no : | P48740 |
| Immunogen : | The antiserum was produced against synthesized peptide derived from human MASP1. AA range:399-448 |
| Specificity : | Cleaved-MASP-1 HC (R448) Polyclonal Antibody detects endogenous levels of fragment of activated MASP-1 HC protein resulting from cleavage adjacent to R448. |
| Formulation : | Liquid in PBS containing 50% glycerol, 0.5% BSA and 0.02% sodium azide. |
| Source : | Rabbit |
| Dilution : | Western Blot: 1/500 - 1/2000. ELISA: 1/10000. Not yet tested in other applications. |
| Purification : | The antibody was affinity-purified from rabbit antiserum by affinity-chromatography using epitope-specific immunogen. |
| Concentration : | 1 mg/ml |
| Storage_stability : | -20°C/1 year |
| Msds : | MSDS_Antibody.pdf |
| Other_name : | MASP1; CRARF; CRARF1; PRSS5; Mannan-binding lectin serine protease 1; Complement factor MASP-3; Complement-activating component of Ra-reactive factor; Mannose-binding lectin-associated serine protease 1; MASP-1; Mannose-binding protein-asso |
| Molecular Weight : | 47KD |

Product Images



Western Blot analysis of various cells using Cleaved-MASP-1 HC (R448) Polyclonal Antibody