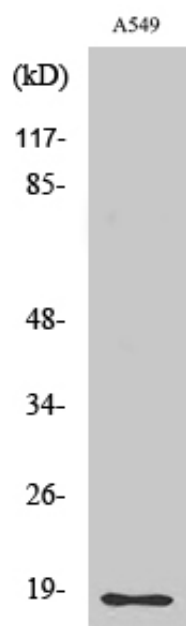




## Cleaved-MMP-1 22k (F100) Polyclonal Antibody

Catalog_no :	AC0099
Applications :	WB,ELISA
Reactivity :	Human
Category :	抗原抗体
Size :	100µg/50µg/20µg
Gene_name :	MMP1
Protein_name :	Interstitial collagenase
Humangene_id :	<a href="#">4312</a>
Humanswissprot_no :	<a href="#">P03956</a>
Immunogen :	The antiserum was produced against synthesized peptide derived from human MMP1. AA range:81-130
Specificity :	Cleaved-MMP-1 22k (F100) Polyclonal Antibody detects endogenous levels of fragment of activated MMP-1 22k protein resulting from cleavage adjacent to F100.
Formulation :	Liquid in PBS containing 50% glycerol, 0.5% BSA and 0.02% sodium azide.
Source :	Rabbit
Dilution :	Western Blot: 1/500 - 1/2000. ELISA: 1/10000. Not yet tested in other applications.
Purification :	The antibody was affinity-purified from rabbit antiserum by affinity-chromatography using epitope-specific immunogen.
Concentration :	1 mg/ml
Storage_stability :	-20°C/1 year
Msds :	MSDS_Antibody.pdf
Other_name :	MMP1; CLG; Interstitial collagenase; Fibroblast collagenase; Matrix metalloproteinase-1; MMP-1
Molecular Weight :	19KD

## Product Images



Western Blot analysis of various cells using Cleaved-MMP-1 22k (F100) Polyclonal Antibody